

We encourage everyone to view the meeting live via YouTube.

***Leavenworth County
Board of County Commissioners***

Regular Meeting Agenda
300 Walnut Street, Suite 225
Leavenworth, KS 66048
January 29, 2025
9:00 a.m.

- I. CALL TO ORDER
- II. PLEDGE OF ALLEGIANCE/MOMENT OF SILENT PRAYER
- III. ROLL CALL
- IV. PUBLIC COMMENT: Public Comment shall be limited to 15 minutes at the beginning of each meeting and limited to three minutes per person. Anyone wishing to make comments either on items on the agenda or not are encouraged to provide their comments in writing no later than 8:00 AM the Monday immediately preceding the meeting. These comments will be included in the agenda packet for everyone to access and review. This allows the Commission to have time to fully consider input and request follow up if needed prior to the meeting.
- V. ADMINISTRATIVE BUSINESS:
- VI. CONSENT AGENDA: The items on the Consent Agenda are considered by staff to be routine business items. Approval of the items may be made by a single motion, seconded, and a majority vote with no separate discussion of any item listed. Should a member of the Governing Body desire to discuss any item, it will be removed from the Consent Agenda and considered separately.
 - a) Approval of the minutes of the meeting of January 22, 2025
 - b) Approval of the schedule for the week of February 3, 2025
 - c) Approval of the check register
 - d) Approve and sign the OCB's
- VII. FORMAL BOARD ACTION:

- a) Consider a motion to approve the non-sanctuary county proclamation.
- b) Consider a motion to approve the updated public comment policy.
- c) Consider a motion to approve a six-year contract with Eagleview to provide ortho and oblique imagery to the County.

VIII. PRESENTATIONS AND DISCUSSION ITEMS: presentations are materials of general concern where no action or vote is requested or anticipated.

- a) Presentation from Treanor regarding options for second phase of stone work for the Courthouse.
- b) Quarterly reports
 - Solid Waste
 - Council on Aging
 - EMS/Health Dept.

IX. ADJOURNMENT

LEAVENWORTH COUNTY COMMISSIONERS MEETING SCHEDULE

Monday, January 27, 2025

Tuesday, January 28, 2025

8:00 a.m. Workforce Partnership

12:00 p.m. MARC meeting

Wednesday, January 29, 2025

9:00 a.m. Leavenworth County Commission meeting
• Commission Meeting Room, 300 Walnut, Leavenworth KS

Thursday, January 30, 2025

Friday, January 31, 2025

ALL SUCH OTHER BUSINESS THAT MAY COME BEFORE THE COMMISSION

ALL MEETINGS ARE OPEN TO THE PUBLIC

COMMENTS SHOULD BE OF GENERAL INTEREST OF THE PUBLIC AND SUBJECT TO THE RULES OF DECORUM

A PROCLAMATION OF THE BOARD OF COUNTY COMMISSIONERS OF THE COUNTY OF LEAVENWORTH, KANSAS, DECLARING THE DESIGNATION OF LEAVENWORTH COUNTY, KANSAS, AS A “NON-SANCTUARY” COUNTY

WHEREAS the board of county commissioners is aware that certain local governments in the United States have designated themselves as “sanctuary” jurisdictions for the purpose of declaring their support, through the extension of government services, to undocumented aliens who have entered the United States illegally; and,

WHEREAS the board of county commissioners is aware that harboring and supporting undocumented aliens who have entered the United States illegally significantly increases the risk of human trafficking, degrades national security and runs afoul of the intent, if not the letter, of the Victims of Trafficking and Violence Protection Act of 2000, the Immigration and Nationality Act of 1965, the Immigration Reform and Control Act of 1986, the Immigration Act of 1990, the Enhanced Border Security and Visa Reform Act of 2002, the Homeland Security Act of 2002 and the REAL ID Act of 2005; and,

WHEREAS the board of county commissioners is bound by their oaths of office to uphold and support the laws of the state of Kansas, the laws of the United States and the constitutions of the state of Kansas and the United States; and,

WHEREAS the support through the extension of government services, specifically services of the county government, to undocumented aliens who have entered the United States illegally would violate the oaths of office of the members of the board of county commissioners.

NOW BE IT THEREFORE PROCLAIMED:

1. That the county of Leavenworth, Kansas, is hereby designated as a “Non-Sanctuary” county and that the board of county commissioners shall not extend any local government services to the harboring or support of undocumented aliens who have entered the United States illegally.

2. That the board of county commissioners shall work to assist local, state and federal authorities in the enforcement of the laws of the state of Kansas and the United States, particularly as they are recited above.

3. That the county of Leavenworth welcomes and supports those alien persons who have entered the United States legally and remain in the United States in accord with local, state and federal laws.

ADOPTED THIS 29th DAY OF JANUARY, 2025.

MIKE SMITH, CHAIR

VANESSA REID, MEMBER

JEFF CULBERTSON, MEMBER

WILLIE DOVE, MEMBER

MIKE STIEBEN, MEMBER

ATTEST: _____
FRAN KEPPLER, CLERK

SEAL:

*****January 22, 2025 *****

The Board of County Commissioners met in a regular session on Wednesday, January 22, 2025. Commissioner Culbertson; Commissioner Smith, Commissioner Stieben, Commissioner Reid and Commissioner Dove are present; Also present: Mark Loughry, County Administrator; Misty Brown, County Counselor; Aaron Yoakam, Buildings and Grounds Director; Bill Noll, Infrastructure and Construction Services; John Richmeier, Leavenworth Times

PUBLIC COMMENT:

There were no public comments.

ADMINISTRATIVE BUSINESS:

Commissioner Stieben acknowledged the anniversary of Roe vs. Wade.

Commissioner Stieben updated the Board regarding the property tax cap bill.

Commissioner Stieben requested the clerk to notify the Board when a township position becomes vacant.

A motion was made by Commissioner Culbertson and seconded by Commissioner Stieben to accept the consent agenda for Wednesday, January 22, 2025 as presented.

Motion passed, 5-0.

A motion was made by Commissioner Reid and seconded by Commissioner Culbertson to appoint Commissioner Stieben to the Workforce Partnership.

Motion passed, 4-0 Commissioner Stieben abstained.

A motion was made by Commissioner Stieben and seconded by Commissioner to nominate Mike Smith on the Port Authority Board to represent the County.

Motion passed, 5-0.

A motion was made by Commissioner Stieben and seconded by Commissioner Smith to nominate Vanessa Reid to the LCDC Board.

Motion passed, 5-0.

A motion was made by Commissioner Stieben and seconded by Commissioner Smith to appoint Willie Dove to the Mental Health Advisory Board.

Motion passed, 5-0.

A motion was made by Commissioner Smith and seconded by Commissioner Dove to put Mike Stieben on the MARC Board of Directors.

Motion passed, 5-0.

A motion was made by Commissioner Stieben and seconded by Commissioner Smith to put Commissioner Dove as the alternate on the MARC Board of Directors.

Motion passed, 5-0.

A motion was made by Commissioner Stieben and seconded by Commissioner Smith to appoint Commissioner Dove as a NEK-CAP representative for Leavenworth County.

Motion passed, 5-0.

A motion was made by Commissioner Stieben and seconded by Commissioner Culbertson to appoint Mike Smith to the Juvenile Corrections Advisory Board.

Motion passed, 5-0.

A motion was made by Commissioner Smith and seconded by Commissioner Reid to appoint Commissioner Stieben to the Adult Corrections Advisory Board.

Motion passed, 5-0.

A motion was made by Commissioner Stieben and seconded by Commissioner Smith that Commissioner Reid take the Government Affairs committee position.

Motion passed, 5-0.

A motion was made by Commissioner Reid and seconded by Commissioner Dove to remove Vicky Kaaz from the current seat on the KCATA.

Motion passed; 4-0 Commissioner Culbertson abstained.

A motion was made by Commissioner Reid and seconded by Commissioner Smith to appoint Mike Stieben to the KCATA to represent Leavenworth County.

Motion passed, 4-0, Commissioner Culbertson abstained.

Commissioner Stieben stated he would like to withdraw from the Workforce Partnership board.

A motion was made by Commissioner Stieben and seconded by Commissioner Smith to appoint Commissioner Reid to the Workforce Partnership Board.

Motion passed, 4-0. Commissioner Reid abstained.

A draft letter was presented for approval requesting salary information for township fire chiefs.

A motion was made by Commissioner Stieben and seconded by Commissioner Dove to approve the letter that counsel has drafted and be sent out.

Motion passed, 5-0.

Draft letters were presented for approval regarding the changes to the services provided by Munson Hospital.

A motion was made by Commissioner Culbertson and seconded by Commissioner Reid to approve sending out a letter to Senators Moran and Marshall.

Motion passed, 5-0.

Bill Noll presented the annual agreement to treat noxious weeds.

A motion was made by Commissioner Reid and seconded by Commissioner Stieben to approve the annual agreement to treat noxious weeds.

Motion passed, 5-0.

Mr. Noll presented a supplemental agreement for the Tonganoxie Road HRRR project.

A motion as was made by Commissioner Reid and seconded by Commissioner Dove to approve the KDOT supplemental agreement for the second phase of the Tonganoxie Road High Risk Rural Roads project.

Motion passed, 5-0.

Aaron Yoakam presented the quarterly report for Buildings and Grounds.

The public comment policy was presented for any changes.

It was the consensus of the Board to change it to 5 minutes at the beginning with a 25-minute limit. Public comment at the end of the meeting will remain with a 5 minute per person change.

The Board discussed quarterly meetings in different locations.

It was the consensus of the Board to meet with the cities quarterly.

A motion was made by Commissioner Stieben and seconded by Commissioner Smith that the Board recess for a closed executive meeting for the discussion of subjects involving the legal interests of the County and confidential matters related to pending litigation as justified by K.S.A. 75-4319(b)(2) for consultation with legal counsel which would be deemed privileged in the attorney-client relationship and that the Board resume open meeting at 10:35 a.m. in the meeting room of the Board. Present in the executive meeting will be Commissioners Jeff Culbertson, Vanessa Reid, Mike Smith, Willie Dove and Mike Stieben, County Counselor Misty Brown, County Administrator Mark Loughry and others that may be called.

Motion passed, 5-0.

The Board returned to regular session at 10:35 a.m. No action was taken and no decisions were made. The subject was limited to the legal interests of the County.

A motion was made by Commissioner Stieben and seconded by Commissioner Smith that the Board recess for a closed executive meeting for the discussion of subjects involving the legal interests of the County and confidential matters related to pending litigation as justified by K.S.A. 75-4319(b)(2) for consultation with legal counsel which would be deemed privileged in the attorney-client relationship and that the Board resume open meeting at 11:00 a.m. in the meeting room of the Board. Present in the executive meeting will be Commissioners Jeff Culbertson, Vanessa Reid, Mike Smith, Willie Dove and Mike Stieben, County Counselor Misty Brown, County Administrator Mark Loughry and others that may be called.

Motion passed, 3-0.

The Board returned to regular session at 11:00 a.m. No action was taken and the subject was limited to the legal interests of the County.

Commissioner Reid acknowledged a letter from Sallie Melton regarding the Sheriff's Department Citizen's Academy.

Commissioner Stieben inquired if the Board wants to update letters to representative for the property tax cap and the non-sanctuary county resolution.

Commissioner Dove inquired about the material used on chip-seal roads.

Commissioners Reid and Smith attended the annual LCDC meeting.

Commissioners Reid and Dove will participate in Government Day.

Commissioner Reid mentioned that in her on board training she came across gender focused training which she indicated was quickly addressed with staff.

*A motion was made by Commissioner Smith and seconded by Commissioner Dove to adjourn.
Motion passed, 5-0.*

The Board adjourned at 11:13 a.m.

Draft

LEAVENWORTH COUNTY COMMISSIONERS MEETING SCHEDULE

Monday, February 3, 2025

Tuesday, February 4, 2025

Wednesday, February 5, 2025

9:00 a.m. Leavenworth County Commission meeting
• Commission Meeting Room, 300 Walnut, Leavenworth KS

Thursday, February 6, 2025

Friday, February 7, 2025

ALL SUCH OTHER BUSINESS THAT MAY COME BEFORE THE COMMISSION

ALL MEETINGS ARE OPEN TO THE PUBLIC

COMMENTS SHOULD BE OF GENERAL INTEREST OF THE PUBLIC AND SUBJECT TO THE RULES OF DECORUM

START DATE: 01/18/2025 END DATE: 01/24/2025

TYPES OF CHECKS SELECTED: * ALL TYPES

			P.O.NUMBER	CHECK#					
2541	BEST PLUMBING SPECIA	BEST PLUMBING SPECIALTIES,INC	346672	112257 AP	01/24/2025	5-001-5-07-357	65483 JAIL PLUMBING SUPPLIES	585.70	
856	BREWER LAW GROUP	BREWER LAW GROUP, LLC	346673	112258 AP	01/24/2025	5-001-5-09-231	COURT APPOINTED ATTORNEY	3,000.00	
4938	BUILDING & GROUNDS	BUILDING & GROUNDS	346674	112259 AP	01/24/2025	5-001-5-07-207	SHERIFF REIMB BG FOR JF DENNEY	452.69	
36	CAHILL PAT	PATRICK J CAHILL	346676	112261 AP	01/24/2025	5-001-5-09-231	COURT APPOINTED ATTORNEY	3,000.00	
362	CASAD BENJAMIN	BENJAMIN CASAD	346677	112262 AP	01/24/2025	5-001-5-09-231	COURT APPOINTED ATTORNEY	3,000.00	
1003	CENTRALSQUARE	CENTRALSQUARE TECHNOLOGIES,LLC	346679	112264 AP	01/24/2025	5-001-5-07-262	6790 ADD FIELD OPS ANNUAL SUBS	480.00	
648	COMMERCE BANK-COMMER	COMMERCE BANK-COMMERCIAL CARDS	346773	403	01/24/2025	5-001-5-01-212	BOCC:BM:MISC RECOGNITIONS	88.17	
648	COMMERCE BANK-COMMER	COMMERCE BANK-COMMERCIAL CARDS	346773	403	01/24/2025	5-001-5-01-212	BOCC:BM:MISC RECOGNITIONS	79.49	
648	COMMERCE BANK-COMMER	COMMERCE BANK-COMMERCIAL CARDS	346773	403	01/24/2025	5-001-5-03-301	CO TREAS:TT:OFFICE SUPPLY	25.73	
648	COMMERCE BANK-COMMER	COMMERCE BANK-COMMERCIAL CARDS	346773	403	01/24/2025	5-001-5-05-205	EMS:FIELD SUPPLY, VEH/BLDG MAI	2.40	
648	COMMERCE BANK-COMMER	COMMERCE BANK-COMMERCIAL CARDS	346773	403	01/24/2025	5-001-5-05-209	EMS:FIELD SUPPLY, VEH/BLDG MAI	55.00	
648	COMMERCE BANK-COMMER	COMMERCE BANK-COMMERCIAL CARDS	346773	403	01/24/2025	5-001-5-05-213	EMS:CJ:MS:SB:VEH MAINT,FIELD S	1,184.50	
648	COMMERCE BANK-COMMER	COMMERCE BANK-COMMERCIAL CARDS	346773	403	01/24/2025	5-001-5-05-216	EMS:FIELD SUPPLY, VEH/BLDG MAI	358.30	
648	COMMERCE BANK-COMMER	COMMERCE BANK-COMMERCIAL CARDS	346773	403	01/24/2025	5-001-5-05-280	MIDWEST MOBILE RADIO	443.00	
648	COMMERCE BANK-COMMER	COMMERCE BANK-COMMERCIAL CARDS	346773	403	01/24/2025	5-001-5-05-306	EMS:FIELD SUPPLY, VEH/BLDG MAI	177.60	
648	COMMERCE BANK-COMMER	COMMERCE BANK-COMMERCIAL CARDS	346773	403	01/24/2025	5-001-5-05-306	EMS:CJ:MS:SB:VEH MAINT,FIELD S	23.99	
648	COMMERCE BANK-COMMER	COMMERCE BANK-COMMERCIAL CARDS	346773	403	01/24/2025	5-001-5-05-306	EMS:CJ:MS:SB:VEH MAINT,FIELD S	17.88	
648	COMMERCE BANK-COMMER	COMMERCE BANK-COMMERCIAL CARDS	346773	403	01/24/2025	5-001-5-05-306	EMS:CJ:MS:SB:VEH MAINT,FIELD S	55.76	
648	COMMERCE BANK-COMMER	COMMERCE BANK-COMMERCIAL CARDS	346773	403	01/24/2025	5-001-5-05-350	EMS:CJ:MS:SB:VEH MAINT,FIELD S	715.24	
648	COMMERCE BANK-COMMER	COMMERCE BANK-COMMERCIAL CARDS	346773	403	01/24/2025	5-001-5-05-381	EMS:FIELD SUPPLY, VEH/BLDG MAI	6,853.21	
648	COMMERCE BANK-COMMER	COMMERCE BANK-COMMERCIAL CARDS	346773	403	01/24/2025	5-001-5-05-381	EMS:CJ:MS:SB:VEH MAINT,FIELD S	329.37	
648	COMMERCE BANK-COMMER	COMMERCE BANK-COMMERCIAL CARDS	346773	403	01/24/2025	5-001-5-05-381	EMS:CJ:MS:SB:VEH MAINT,FIELD S	2.62	
648	COMMERCE BANK-COMMER	COMMERCE BANK-COMMERCIAL CARDS	346773	403	01/24/2025	5-001-5-05-383	EMS:FIELD SUPPLY, VEH/BLDG MAI	92.99	
648	COMMERCE BANK-COMMER	COMMERCE BANK-COMMERCIAL CARDS	346773	403	01/24/2025	5-001-5-05-383	EMS:CJ:MS:SB:VEH MAINT,FIELD S	20.24	
648	COMMERCE BANK-COMMER	COMMERCE BANK-COMMERCIAL CARDS	346773	403	01/24/2025	5-001-5-06-202	PZ:KA:WATER FOR PLANNING COMMI	17.94	
648	COMMERCE BANK-COMMER	COMMERCE BANK-COMMERCIAL CARDS	346773	403	01/24/2025	5-001-5-06-219	PLANNING:DC:TONER, TRAINING	106.54	
648	COMMERCE BANK-COMMER	COMMERCE BANK-COMMERCIAL CARDS	346773	403	01/24/2025	5-001-5-06-301	PLANNING:DC:TONER, TRAINING	121.26	
648	COMMERCE BANK-COMMER	COMMERCE BANK-COMMERCIAL CARDS	346773	403	01/24/2025	5-001-5-07-202	LVSO:AD KS SHERIFF ASSOC TNG	462.83	
648	COMMERCE BANK-COMMER	COMMERCE BANK-COMMERCIAL CARDS	346773	403	01/24/2025	5-001-5-07-202	LVSO:AA,BC,T3 TNG,DUES,JAIL	495.00	
648	COMMERCE BANK-COMMER	COMMERCE BANK-COMMERCIAL CARDS	346773	403	01/24/2025	5-001-5-07-203	LVSO:AA,BC,T3 TNG,DUES,JAIL	232.75	
648	COMMERCE BANK-COMMER	COMMERCE BANK-COMMERCIAL CARDS	346773	403	01/24/2025	5-001-5-07-208	MIDWEST MOBILE RADIO	1,106.00	
648	COMMERCE BANK-COMMER	COMMERCE BANK-COMMERCIAL CARDS	346773	403	01/24/2025	5-001-5-07-210	AT&T LVSO 1313	283.97	
648	COMMERCE BANK-COMMER	COMMERCE BANK-COMMERCIAL CARDS	346773	403	01/24/2025	5-001-5-07-218	SHF:BM: PRISONER TRANSPORT	26.99	
648	COMMERCE BANK-COMMER	COMMERCE BANK-COMMERCIAL CARDS	346773	403	01/24/2025	5-001-5-07-359	LVSO:AA,BC,T3 TNG,DUES,JAIL	242.88	
648	COMMERCE BANK-COMMER	COMMERCE BANK-COMMERCIAL CARDS	346773	403	01/24/2025	5-001-5-11-202	CAO:LG:TRAINING,OFFICE SUPPLIE	250.00	
648	COMMERCE BANK-COMMER	COMMERCE BANK-COMMERCIAL CARDS	346773	403	01/24/2025	5-001-5-11-203	CAO:TT:KCDAA MEMBERSHIPS, OFFI	1,050.00	
648	COMMERCE BANK-COMMER	COMMERCE BANK-COMMERCIAL CARDS	346773	403	01/24/2025	5-001-5-11-205	KTA - COUNTY ATTORNEY	5.04	
648	COMMERCE BANK-COMMER	COMMERCE BANK-COMMERCIAL CARDS	346773	403	01/24/2025	5-001-5-11-301	CAO:LG:TRAINING,OFFICE SUPPLIE	124.07	
648	COMMERCE BANK-COMMER	COMMERCE BANK-COMMERCIAL CARDS	346773	403	01/24/2025	5-001-5-11-301	CAO:TT:KCDAA MEMBERSHIPS, OFFI	1,551.22	
648	COMMERCE BANK-COMMER	COMMERCE BANK-COMMERCIAL CARDS	346773	403	01/24/2025	5-001-5-14-224	NATIONWIDE BOND M W SMITH 790	170.00	
648	COMMERCE BANK-COMMER	COMMERCE BANK-COMMERCIAL CARDS	346773	403	01/24/2025	5-001-5-19-217	DIST CT:JC:PUBLICATION	150.00	
648	COMMERCE BANK-COMMER	COMMERCE BANK-COMMERCIAL CARDS	346773	403	01/24/2025	5-001-5-23-301	FINANCE:JS:TONER	75.89	
648	COMMERCE BANK-COMMER	COMMERCE BANK-COMMERCIAL CARDS	346773	403	01/24/2025	5-001-5-31-290	BG CH EXT REPAIR,JC MAINT, HD/	229.00	
648	COMMERCE BANK-COMMER	COMMERCE BANK-COMMERCIAL CARDS	346773	403	01/24/2025	5-001-5-31-290	BG CH EXT REPAIR,JC MAINT, HD/	305.16-	
648	COMMERCE BANK-COMMER	COMMERCE BANK-COMMERCIAL CARDS	346773	403	01/24/2025	5-001-5-31-312	BG:EC:MATERIAL-CTHSE	122.93	
648	COMMERCE BANK-COMMER	COMMERCE BANK-COMMERCIAL CARDS	346773	403	01/24/2025	5-001-5-31-320	BG:NH:EQUIP PARTS, JC MAINT SU	45.99	
648	COMMERCE BANK-COMMER	COMMERCE BANK-COMMERCIAL CARDS	346773	403	01/24/2025	5-001-5-31-320	BG:RT;EQUIP PARTS	43.98	
648	COMMERCE BANK-COMMER	COMMERCE BANK-COMMERCIAL CARDS	346773	403	01/24/2025	5-001-5-31-384	BG CH EXT REPAIR,JC MAINT, HD/	197.25	
648	COMMERCE BANK-COMMER	COMMERCE BANK-COMMERCIAL CARDS	346773	403	01/24/2025	5-001-5-31-391	BG CH EXT REPAIR,JC MAINT, HD/	158.84	
648	COMMERCE BANK-COMMER	COMMERCE BANK-COMMERCIAL CARDS	346773	403	01/24/2025	5-001-5-32-391	BG CH EXT REPAIR,JC MAINT, HD/	800.50	
648	COMMERCE BANK-COMMER	COMMERCE BANK-COMMERCIAL CARDS	346773	403	01/24/2025	5-001-5-32-391	BG:NH:EQUIP PARTS, JC MAINT SU	13.96	
648	COMMERCE BANK-COMMER	COMMERCE BANK-COMMERCIAL CARDS	346773	403	01/24/2025	5-001-5-49-301	CLERK:SS:OFFICE SUPPLY	28.88	

START DATE: 01/18/2025 END DATE: 01/24/2025

TYPES OF CHECKS SELECTED: * ALL TYPES

			P.O.NUMBER	CHECK#					
648	COMMERCE BANK-COMMER	COMMERCE BANK-COMMERCIAL CARDS	346773	403	01/24/2025	5-001-5-53-307	NOX WEED:AP:SAFETY	183.08	
							*** VENDOR		648 TOTAL
									18,517.12
8686	EVERGY EFT	EVERGY KANSAS CENTRAL INC	346775	405	01/24/2025	5-001-5-05-215	ELEC SVC EMS 9101	706.66	
8686	EVERGY EFT	EVERGY KANSAS CENTRAL INC	346775	405	01/24/2025	5-001-5-05-215	ELEC SVC EMS ADMIN	1,103.04	
							*** VENDOR		8686 TOTAL
									1,809.70
2410	FIRST CALL INC	FIRST CALL INC	346682	112267 AP	01/24/2025	5-001-5-13-211	DECEMBER TRANSPORTS	125.00	
2410	FIRST CALL INC	FIRST CALL INC	346682	112267 AP	01/24/2025	5-001-5-13-211	DECEMBER TRANSPORTS	125.00	
2410	FIRST CALL INC	FIRST CALL INC	346682	112267 AP	01/24/2025	5-001-5-13-211	DECEMBER TRANSPORTS	125.00	
2410	FIRST CALL INC	FIRST CALL INC	346682	112267 AP	01/24/2025	5-001-5-13-211	DECEMBER TRANSPORTS	125.00	
2410	FIRST CALL INC	FIRST CALL INC	346682	112267 AP	01/24/2025	5-001-5-13-211	DECEMBER TRANSPORTS	125.00	
2410	FIRST CALL INC	FIRST CALL INC	346682	112267 AP	01/24/2025	5-001-5-13-211	DECEMBER TRANSPORTS	125.00	
2410	FIRST CALL INC	FIRST CALL INC	346682	112267 AP	01/24/2025	5-001-5-13-211	DECEMBER TRANSPORTS	125.00	
2410	FIRST CALL INC	FIRST CALL INC	346682	112267 AP	01/24/2025	5-001-5-13-211	DECEMBER TRANSPORTS	300.00	
							*** VENDOR		2410 TOTAL
									1,050.00
656	FLOYD, JAMES	JAMES ANTWONE FLOYD	346683	112268 AP	01/24/2025	5-001-5-09-231	COURT APPOINTED ATTORNEY	3,000.00	
70	FREESTATE EFT	FREESTATE ELECTRIC COOPERATIVE	346772	402	01/24/2025	5-001-5-07-223	ELEC SVC TO SIRENS	455.72	
23435	GUIDANCE C	THE GUIDANCE CENTER	346687	112272 AP	01/24/2025	5-001-5-01-231	PER LEAV CO 2025 BUDGET	72,809.25	
23435	GUIDANCE C	THE GUIDANCE CENTER	346687	112272 AP	01/24/2025	5-001-5-01-231	PER LEAV CO 2025 BUDGET	72,809.25	
23435	GUIDANCE C	THE GUIDANCE CENTER	346687	112272 AP	01/24/2025	5-001-5-01-231	PER LEAV CO 2025 BUDGET	72,809.25	
23435	GUIDANCE C	THE GUIDANCE CENTER	346687	112272 AP	01/24/2025	5-001-5-01-231	PER LEAV CO 2025 BUDGET	72,809.25	
							*** VENDOR		23435 TOTAL
									291,237.00
1941	HALLEY	LAW OFFICE OF E ELAINE HALLEY	346689	112274 AP	01/24/2025	5-001-5-09-231	COURT APPOINTED ATTORNEY	3,000.00	
99	JUROR								

warrants by vendor

START DATE: 01/18/2025 END DATE: 01/24/2025

TYPES OF CHECKS SELECTED: * ALL TYPES

			P.O.NUMBER	CHECK#					
99	JUROR								
						*** VENDOR	99 TOTAL		2,063.40
1190	KAC	KANSAS ASSN OF COUNTIES	346742	112327 AP	01/24/2025	5-001-5-01-203	LEAVENWORTH COUNTY 2025 DUES	17,229.57	
1978	KRYGER GLA	KRYGER GLASS CO	346744	112329 AP	01/24/2025	5-001-5-07-213	144900 UNITS 136 & 124 LVSO WI	362.95	
1978	KRYGER GLA	KRYGER GLASS CO	346744	112329 AP	01/24/2025	5-001-5-07-213	144900 UNITS 136 & 124 LVSO WI	413.29	
							*** VENDOR	1978 TOTAL	776.24
9737	KS ROD	KANSAS REGISTER OF DEEDS ASSN	346745	112330 AP	01/24/2025	5-001-5-04-202	2025 KS ROD ASSOC SCHOOL X2 (F	200.00	

warrants by vendor

TYPES OF CHECKS SELECTED: * ALL TYPES

		P.O.NUMBER	CHECK#							
9737	KS ROD	KANSAS REGISTER OF DEEDS ASSN	346745	112330 AP	01/24/2025	5-001-5-04-202	2025 KS ROD ASSOC SCHOOL X2 (F	200.00		
								*** VENDOR	9737 TOTAL	400.00
26952	LEGAL LANG	LEGAL LANGUAGE SERVICES	346748	112333 AP	01/24/2025	5-001-5-19-221	DIST CT INTERPERTER 1/7/25	227.50		
537	LV TIMES	CHERRYROAD MEDIA INC	346749	112334 AP	01/24/2025	5-001-5-03-218	21275 FUND BALANCE PUBLICATION	47.53		
537	LV TIMES	CHERRYROAD MEDIA INC	346749	112334 AP	01/24/2025	5-001-5-19-217	24156 LEGAL NOTICE 23JC300048	42.74		
537	LV TIMES	CHERRYROAD MEDIA INC	346749	112334 AP	01/24/2025	5-001-5-19-217	24156 LEGAL NOTICE 22JC117	65.90		
								*** VENDOR	537 TOTAL	156.17
2419	MCKESSON MEDICAL SUR	MCKESSON MEDICAL SURGICAL	346654	112251 AP	01/21/2025	5-001-5-07-219	4227550 INMATE MEDICAL SUPPLIE	56.00		
61	MIAMI CO DIST CT	DISTRICT COURT OF MIAMI COUNTY	346751	112336 AP	01/24/2025	5-001-5-19-222	HEARING FEE MI22CT036	60.00		
2059	MIDWEST OFFICE TECH	MIDWEST OFFICE TECHNOLOGY INC	346655	112252 AP	01/21/2025	5-001-5-07-208	LC00_K CONTRACTED COPIES TO 2.	46.06		
2059	MIDWEST OFFICE TECH	MIDWEST OFFICE TECHNOLOGY INC	346752	112337 AP	01/24/2025	5-001-5-28-217	OPL289_K COPIES - HR	46.92		
								*** VENDOR	2059 TOTAL	92.98
906	NMS LABS	NMS LABS	346756	112341 AP	01/24/2025	5-001-5-11-253	151624 LIT SUPPORT PKG LV24CR8	89.00		
9759	PRICE CHOP	BALL'S FOOD STORES	346759	112344 AP	01/24/2025	5-001-5-19-205	9136840427 JURY SUPPLIES	34.95		
7098	QUILL CORP	QUILL CORP	346760	112345 AP	01/24/2025	5-001-5-11-301	8017660 CENTON DATASTICKS	570.56		
7098	QUILL CORP	QUILL CORP	346760	112345 AP	01/24/2025	5-001-5-11-301	8017660 CENTON DATASTICKS	507.20		
								*** VENDOR	7098 TOTAL	1,077.76
1793	ST JOHN 956430	ST JOHN HOSPITAL	346764	112349 AP	01/24/2025	5-001-5-07-219	INMATE MEDICAL BILL	92.43		
829	THOMSON REUTERS	THOMSON REUTERS - WEST	346765	112350 AP	01/24/2025	5-001-5-09-209	1005824053 ONLINE SUBSCR SOFTW	223.00		
829	THOMSON REUTERS	THOMSON REUTERS - WEST	346765	112350 AP	01/24/2025	5-001-5-11-210	1000590171 WEST INFORMATION CH	946.40		
								*** VENDOR	829 TOTAL	1,169.40
5610	UNION MILL SUPPLY	UNION MILL SUPPLY,LLC	346766	112351 AP	01/24/2025	5-001-5-07-359	JAIL PRO DRY 5 GAL X10	830.00		
575	US POSTAL SERVICE	US POSTAL SERVICE (QUADIENT-PO	346767	112352 AP	01/24/2025	5-001-5-01-302	DEC POSTAGE	1.38		
575	US POSTAL SERVICE	US POSTAL SERVICE (QUADIENT-PO	346767	112352 AP	01/24/2025	5-001-5-02-302	DECEMBER POSTAGE	28.44		
575	US POSTAL SERVICE	US POSTAL SERVICE (QUADIENT-PO	346767	112352 AP	01/24/2025	5-001-5-05-302	DECEMBER POSTAGE	450.42		
575	US POSTAL SERVICE	US POSTAL SERVICE (QUADIENT-PO	346767	112352 AP	01/24/2025	5-001-5-06-302	DECEMBER POSTAGE	17.25		
575	US POSTAL SERVICE	US POSTAL SERVICE (QUADIENT-PO	346767	112352 AP	01/24/2025	5-001-5-07-302	DECEMBER POSTAGE	491.34		
575	US POSTAL SERVICE	US POSTAL SERVICE (QUADIENT-PO	346767	112352 AP	01/24/2025	5-001-5-09-232	DEC POSTAGE	11.32		
575	US POSTAL SERVICE	US POSTAL SERVICE (QUADIENT-PO	346767	112352 AP	01/24/2025	5-001-5-11-302	DECEMBER POSTAGE	437.46		
575	US POSTAL SERVICE	US POSTAL SERVICE (QUADIENT-PO	346767	112352 AP	01/24/2025	5-001-5-14-302	DECEMBER POSTAGE	510.92		
575	US POSTAL SERVICE	US POSTAL SERVICE (QUADIENT-PO	346767	112352 AP	01/24/2025	5-001-5-14-302	DECEMBER POSTAGE	23.46		
575	US POSTAL SERVICE	US POSTAL SERVICE (QUADIENT-PO	346767	112352 AP	01/24/2025	5-001-5-19-302	DECEMBER POSTAGE	3,088.57		
575	US POSTAL SERVICE	US POSTAL SERVICE (QUADIENT-PO	346767	112352 AP	01/24/2025	5-001-5-28-302	DECEMBER POSTAGE	35.93		
575	US POSTAL SERVICE	US POSTAL SERVICE (QUADIENT-PO	346767	112352 AP	01/24/2025	5-001-5-41-302	DECEMBER POSTAGE	41.14		
575	US POSTAL SERVICE	US POSTAL SERVICE (QUADIENT-PO	346767	112352 AP	01/24/2025	5-001-5-49-302	DECEMBER POSTAGE	417.27		
575	US POSTAL SERVICE	US POSTAL SERVICE (QUADIENT-PO	346767	112352 AP	01/24/2025	5-001-5-53-301	DECEMBER POSTAGE	.69		
								*** VENDOR	575 TOTAL	5,555.59
2	WATER DEPT	WATER DEPT	346769	112354 AP	01/24/2025	5-001-5-05-215	WATER SVC EMS 9103	70.26		
								TOTAL FUND 001		359,569.18

648	COMMERCE BANK-COMMER	COMMERCE BANK-COMMERCIAL CARDS	346773	403	01/24/2025	5-106-5-00-300	COMM CORR SH COMMODITIES, MEDS	45.50		
648	COMMERCE BANK-COMMER	COMMERCE BANK-COMMERCIAL CARDS	346773	403	01/24/2025	5-106-5-00-300	COMM CORR RB:INMATE RXS, FOOD,	38.49		
								*** VENDOR	648 TOTAL	83.99
								TOTAL FUND 106		83.99

648	COMMERCE BANK-COMMER	COMMERCE BANK-COMMERCIAL CARDS	346773	403	01/24/2025	5-108-5-00-601	MIDWEST MOBILE RADIO	75.00		
22543	COMPLETE FAMILY CARE	COMPLETE FAMILY CARE	346680	112265 AP	01/24/2025	5-108-5-00-384	HEALTH DEPT- ROTAVIRUS VACCINE	87.00		
8686	EVERGY EFT	EVERGY KANSAS CENTRAL INC	346775	405	01/24/2025	5-108-5-00-219	ELEC SVC HEALTH DEPT/WIC	827.28		
8686	EVERGY EFT	EVERGY KANSAS CENTRAL INC	346775	405	01/24/2025	5-108-5-00-606	ELEC SVC HEALTH DEPT/WIC	275.76		
								*** VENDOR	8686 TOTAL	1,103.04
2900	HEALTH/EMS OVERPAY	KANCARE	346690	112275 AP	01/24/2025	5-108-5-00-280	ERF OVERPAYMENT ON CLIENT ACCT	18.00		
2666	MISC REIMBURSEMENTS	SARA BEAUDRY	346753	112338 AP	01/24/2025	5-108-5-00-211	PER DIEM - WICHITA	28.00		

START DATE: 01/18/2025 END DATE: 01/24/2025

TYPES OF CHECKS SELECTED: * ALL TYPES

		P.O.NUMBER	CHECK#							
575	US POSTAL SERVICE	US POSTAL SERVICE (QUADIENT-PO	346767	112352 AP	01/24/2025	5-108-5-00-302	DECEMBER POSTAGE	.69		
575	US POSTAL SERVICE	US POSTAL SERVICE (QUADIENT-PO	346767	112352 AP	01/24/2025	5-108-5-00-302	DECEMBER POSTAGE	19.32		
575	US POSTAL SERVICE	US POSTAL SERVICE (QUADIENT-PO	346767	112352 AP	01/24/2025	5-108-5-00-302	DECEMBER POSTAGE	46.23		
575	US POSTAL SERVICE	US POSTAL SERVICE (QUADIENT-PO	346767	112352 AP	01/24/2025	5-108-5-00-302	DECEMBER POSTAGE	11.04		
575	US POSTAL SERVICE	US POSTAL SERVICE (QUADIENT-PO	346767	112352 AP	01/24/2025	5-108-5-00-302	DECEMBER POSTAGE	10.35		
575	US POSTAL SERVICE	US POSTAL SERVICE (QUADIENT-PO	346767	112352 AP	01/24/2025	5-108-5-00-302	DECEMBER POSTAGE	13.80		
575	US POSTAL SERVICE	US POSTAL SERVICE (QUADIENT-PO	346767	112352 AP	01/24/2025	5-108-5-00-302	DECEMBER POSTAGE	8.53		
575	US POSTAL SERVICE	US POSTAL SERVICE (QUADIENT-PO	346767	112352 AP	01/24/2025	5-108-5-00-606	DECEMBER POSTAGE	75.58		
								*** VENDOR	575 TOTAL	185.54
								TOTAL FUND 108		1,496.58

648	COMMERCE BANK-COMMER	COMMERCE BANK-COMMERCIAL CARDS	346773	403	01/24/2025	5-117-5-00-301	CLERK: FK:KCCEOA	22.86		
								TOTAL FUND 117	22.86	

1845	WICHITA STATE U	WICHITA STATE UNIVERSITY	346771	112356 AP	01/24/2025	5-119-5-00-253	CONT ED TOWARD RECERT T MASHB	30.00		
								TOTAL FUND 119	30.00	

4938	BUILDING & GROUNDS	BUILDING & GROUNDS	346674	112259 AP	01/24/2025	5-126-5-00-224	COMMUNITY CORRECTIONS OCT-DEC	2,380.00		
1708	SHERIFF - SECURITY	LEAV CO SHERIFF-SECURITY	346763	112348 AP	01/24/2025	5-126-5-00-224	OCT-DEC SECURITY COMM CORRECTI	549.49		
575	US POSTAL SERVICE	US POSTAL SERVICE (QUADIENT-PO	346767	112352 AP	01/24/2025	5-126-5-00-321	DECEMBER POSTAGE	36.40		
								TOTAL FUND 126	2,965.89	

648	COMMERCE BANK-COMMER	COMMERCE BANK-COMMERCIAL CARDS	346773	403	01/24/2025	5-127-5-00-3	COMM CORR SH COMMODITIES, MEDS	45.94		
648	COMMERCE BANK-COMMER	COMMERCE BANK-COMMERCIAL CARDS	346773	403	01/24/2025	5-127-5-00-3	COMM CORR RB:INMATE RXS, FOOD,	61.91		
648	COMMERCE BANK-COMMER	COMMERCE BANK-COMMERCIAL CARDS	346773	403	01/24/2025	5-127-5-00-3	COMM CORR CS:COMODITIES	47.98		
								*** VENDOR	648 TOTAL	155.83
2505	INTRINSIC INTERVENTI	INTRINSIC INTERVENTIONS	346696	112281 AP	01/24/2025	5-127-5-00-3	LAB COSTS 4 CLIENTS	25.00		
2505	INTRINSIC INTERVENTI	INTRINSIC INTERVENTIONS	346696	112281 AP	01/24/2025	5-127-5-00-3	LAB COSTS 4 CLIENTS	25.00		
2505	INTRINSIC INTERVENTI	INTRINSIC INTERVENTIONS	346696	112281 AP	01/24/2025	5-127-5-00-3	LAB COSTS 4 CLIENTS	35.00		
2505	INTRINSIC INTERVENTI	INTRINSIC INTERVENTIONS	346696	112281 AP	01/24/2025	5-127-5-00-3	LAB COSTS 4 CLIENTS	25.00		
2505	INTRINSIC INTERVENTI	INTRINSIC INTERVENTIONS	346696	112281 AP	01/24/2025	5-127-5-00-3	LAB COSTS 4 CLIENTS	35.00		
								*** VENDOR	2505 TOTAL	145.00
								TOTAL FUND 127	300.83	

4120	ACE IMAGEWEAR	AAA LAUNDRY & LINEN SUPPLY CO	346669	112254 AP	01/24/2025	5-133-5-00-215	1-18 4013-01993 UNIFORM RENTAL	1,213.34		
4120	ACE IMAGEWEAR	AAA LAUNDRY & LINEN SUPPLY CO	346669	112254 AP	01/24/2025	5-133-5-00-312	1-18 4013-01993 UNIFORM RENTAL	271.08		
								*** VENDOR	4120 TOTAL	1,484.42
2509	CENTRAL SALT, LLC	CENTRAL SALT, LLC	346678	112263 AP	01/24/2025	5-133-5-00-306	1-19 C00404 BULK DEICING SALT	1,531.48		
2509	CENTRAL SALT, LLC	CENTRAL SALT, LLC	346678	112263 AP	01/24/2025	5-133-5-00-306	1-19 C00404 BULK DEICING SALT	1,508.74		
2509	CENTRAL SALT, LLC	CENTRAL SALT, LLC	346678	112263 AP	01/24/2025	5-133-5-00-306	1-19 C00404 BULK DEICING SALT	1,554.23		
2509	CENTRAL SALT, LLC	CENTRAL SALT, LLC	346678	112263 AP	01/24/2025	5-133-5-00-306	1-19 C00404 BULK DEICING SALT	3,096.79		
								*** VENDOR	2509 TOTAL	7,691.24
648	COMMERCE BANK-COMMER	COMMERCE BANK-COMMERCIAL CARDS	346773	403	01/24/2025	5-133-5-00-201	1-13 DB,JM,BN,PW:TNG/TVL,SOFTW	525.00		
648	COMMERCE BANK-COMMER	COMMERCE BANK-COMMERCIAL CARDS	346773	403	01/24/2025	5-133-5-00-201	1-13 DB,JM,BN,PW:TNG/TVL,SOFTW	650.00		
648	COMMERCE BANK-COMMER	COMMERCE BANK-COMMERCIAL CARDS	346773	403	01/24/2025	5-133-5-00-207	MIDWEST MOBILE RADIO	500.00		
648	COMMERCE BANK-COMMER	COMMERCE BANK-COMMERCIAL CARDS	346773	403	01/24/2025	5-133-5-00-209	1-13 DB,JM,BN,PW:TNG/TVL,SOFTW	135.00		
648	COMMERCE BANK-COMMER	COMMERCE BANK-COMMERCIAL CARDS	346773	403	01/24/2025	5-133-5-00-210	1-4 AT&T MOBILITY PD 361.70 S/	361.07		
648	COMMERCE BANK-COMMER	COMMERCE BANK-COMMERCIAL CARDS	346773	403	01/24/2025	5-133-5-00-210	1-4 AT&T MOBILITY PD 361.70 S/	.63		
648	COMMERCE BANK-COMMER	COMMERCE BANK-COMMERCIAL CARDS	346773	403	01/24/2025	5-133-5-00-211	1-13 DB,JM,BN,PW:TNG/TVL,SOFTW	515.00		
648	COMMERCE BANK-COMMER	COMMERCE BANK-COMMERCIAL CARDS	346773	403	01/24/2025	5-133-5-00-301	1-15 TE,GH,CS,VG:TIRES,PARTS,	39.84		
648	COMMERCE BANK-COMMER	COMMERCE BANK-COMMERCIAL CARDS	346773	403	01/24/2025	5-133-5-00-309	1-15 TE,GH,CS,VG:TIRES,PARTS,	1,160.40		
648	COMMERCE BANK-COMMER	COMMERCE BANK-COMMERCIAL CARDS	346773	403	01/24/2025	5-133-5-00-309	1-16 PW:JW,AA:PARTS, WELD/SAFE	580.20		

START DATE: 01/18/2025 END DATE: 01/24/2025

TYPES OF CHECKS SELECTED: * ALL TYPES

			P.O.NUMBER	CHECK#						
648	COMMERCE BANK-COMMER	COMMERCE BANK-COMMERCIAL CARDS	346773	403	01/24/2025	5-133-5-00-310	1-16	PW:JW,AA:PARTS, WELD/SAFE	139.40	
648	COMMERCE BANK-COMMER	COMMERCE BANK-COMMERCIAL CARDS	346773	403	01/24/2025	5-133-5-00-311	1-16	PW:JW,AA:PARTS, WELD/SAFE	234.96	
648	COMMERCE BANK-COMMER	COMMERCE BANK-COMMERCIAL CARDS	346773	403	01/24/2025	5-133-5-00-312	1-15	TE,GH,CS,VG:TIRES,PARTS,	4,215.49	
648	COMMERCE BANK-COMMER	COMMERCE BANK-COMMERCIAL CARDS	346773	403	01/24/2025	5-133-5-00-312	1-16	PW:JW,AA:PARTS, WELD/SAFE	221.91	
648	COMMERCE BANK-COMMER	COMMERCE BANK-COMMERCIAL CARDS	346773	403	01/24/2025	5-133-5-00-312	1-16	PW:JW,AA:PARTS, WELD/SAFE	1,081.65	
648	COMMERCE BANK-COMMER	COMMERCE BANK-COMMERCIAL CARDS	346773	403	01/24/2025	5-133-5-00-360	1-15	TE,GH,CS,VG:TIRES,PARTS,	261.90	
648	COMMERCE BANK-COMMER	COMMERCE BANK-COMMERCIAL CARDS	346773	403	01/24/2025	5-133-5-00-360	1-16	PW:JW,AA:PARTS, WELD/SAFE	4,452.83	
648	COMMERCE BANK-COMMER	COMMERCE BANK-COMMERCIAL CARDS	346773	403	01/24/2025	5-133-5-00-364	1-16	PW:JW,AA:PARTS, WELD/SAFE	155.76	
648	COMMERCE BANK-COMMER	COMMERCE BANK-COMMERCIAL CARDS	346773	403	01/24/2025	5-133-5-00-365	1-16	PW:JW,AA:PARTS, WELD/SAFE	46.37	
648	COMMERCE BANK-COMMER	COMMERCE BANK-COMMERCIAL CARDS	346773	403	01/24/2025	5-133-5-00-440	1-16	PW:JW,AA:PARTS, WELD/SAFE	251.54	
								*** VENDOR		
								648 TOTAL		15,528.95
8686	EVERGY EFT	EVERGY KANSAS CENTRAL INC	346775	405	01/24/2025	5-133-5-00-251	1-36	ELEC SVC CO SHOP ET AL	1,252.18	
8686	EVERGY EFT	EVERGY KANSAS CENTRAL INC	346775	405	01/24/2025	5-133-5-00-251	1-36	ELEC SVC CO SHOP ET AL	962.45	
8686	EVERGY EFT	EVERGY KANSAS CENTRAL INC	346775	405	01/24/2025	5-133-5-00-251	1-36	ELEC SVC CO SHOP ET AL	25.40	
8686	EVERGY EFT	EVERGY KANSAS CENTRAL INC	346775	405	01/24/2025	5-133-5-00-251	1-36	ELEC SVC CO SHOP ET AL	462.14	
								*** VENDOR		
								8686 TOTAL		2,702.17
2588	FOLEY EQUIPMENT	FOLEY EQUIPMENT	346684	112269 AP	01/24/2025	5-133-5-00-360	1-20	016993 MOTOR KIT	556.35	
507	FORCE AMERICA	FORCE AMERICA DISTRIBUTING LLC	346685	112270 AP	01/24/2025	5-133-5-00-360	1-21	404075 CLAMP STYLE PULSE	696.12	
70	FREESTATE EFT	FREESTATE ELECTRIC COOPERATIVE	346772	402	01/24/2025	5-133-5-00-251	1-37	ELEC SVC TONGIE QUARRY/SH	58.74	
27474	HEAVYQUIP	HEAVYQUIP	346691	112276 AP	01/24/2025	5-133-5-00-360	1-23	08473-C WHEELS, HUBS, TIR	1,660.00	
27474	HEAVYQUIP	HEAVYQUIP	346691	112276 AP	01/24/2025	5-133-5-00-360	1-23	08473-C WHEELS, HUBS, TIR	3,630.00	
27474	HEAVYQUIP	HEAVYQUIP	346691	112276 AP	01/24/2025	5-133-5-00-360	1-23	08473-C WHEELS, HUBS, TIR	2,175.00	
								*** VENDOR		
								27474 TOTAL		7,465.00
3621	HERITAGE-CRYSTAL CLE	HERITAGE-CRYSTAL CLEAN,LLC	346692	112277 AP	01/24/2025	5-133-5-00-310	1-22	74217 DRUM MOUNTS	932.21	
369	HOLLIDAY	HOLLIDAY SAND & GRAVEL CO	346694	112279 AP	01/24/2025	5-133-5-00-306	1-25218331	IC SAND	14,007.48	
369	HOLLIDAY	HOLLIDAY SAND & GRAVEL CO	346694	112279 AP	01/24/2025	5-133-5-00-306	1-25218331	IC SAND	7,313.46	
								*** VENDOR		
								369 TOTAL		21,320.94
191	HOME DEPOT	HOME DEPOT USA	346695	112280 AP	01/24/2025	5-133-5-00-312	1-24	1111680 USB SURGE PROTECT	126.91	
8408	KANSAS STA	KANSAS STATE HISTORICAL SOCIET	346743	112328 AP	01/24/2025	5-133-5-00-327	1-26	16 SURVEY REFERENCE REPOR	64.00	
232	MHC KENWORTH	MHC KENWORTH-OLATHE	346750	112335 AP	01/24/2025	5-133-5-00-360	1-27	95988 ASKETS, FILERS, ETC	493.20	
232	MHC KENWORTH	MHC KENWORTH-OLATHE	346750	112335 AP	01/24/2025	5-133-5-00-360	1-27	95988 ASKETS, FILERS, ETC	447.40	
232	MHC KENWORTH	MHC KENWORTH-OLATHE	346750	112335 AP	01/24/2025	5-133-5-00-360	1-27	95988 ASKETS, FILERS, ETC	371.80	
232	MHC KENWORTH	MHC KENWORTH-OLATHE	346750	112335 AP	01/24/2025	5-133-5-00-360	1-27	95988 ASKETS, FILERS, ETC	98.44	
232	MHC KENWORTH	MHC KENWORTH-OLATHE	346750	112335 AP	01/24/2025	5-133-5-00-360	1-27	95988 ASKETS, FILERS, ETC	33.70	
232	MHC KENWORTH	MHC KENWORTH-OLATHE	346750	112335 AP	01/24/2025	5-133-5-00-360	1-27	95988 ASKETS, FILERS, ETC	181.84	
232	MHC KENWORTH	MHC KENWORTH-OLATHE	346750	112335 AP	01/24/2025	5-133-5-00-360	1-27	95988 ASKETS, FILERS, ETC	54.32	
232	MHC KENWORTH	MHC KENWORTH-OLATHE	346750	112335 AP	01/24/2025	5-133-5-00-360	1-27	95988 ASKETS, FILERS, ETC	255.15	
232	MHC KENWORTH	MHC KENWORTH-OLATHE	346750	112335 AP	01/24/2025	5-133-5-00-360	1-28	95988 FILTERS, CARTRIDGES	59.19	
232	MHC KENWORTH	MHC KENWORTH-OLATHE	346750	112335 AP	01/24/2025	5-133-5-00-360	1-28	95988 FILTERS, CARTRIDGES	179.75	
232	MHC KENWORTH	MHC KENWORTH-OLATHE	346750	112335 AP	01/24/2025	5-133-5-00-360	1-28	95988 FILTERS, CARTRIDGES	108.00	
232	MHC KENWORTH	MHC KENWORTH-OLATHE	346750	112335 AP	01/24/2025	5-133-5-00-360	1-28	95988 FILTERS, CARTRIDGES	243.99	
232	MHC KENWORTH	MHC KENWORTH-OLATHE	346750	112335 AP	01/24/2025	5-133-5-00-360	1-28	95988 FILTERS, CARTRIDGES	231.26	
232	MHC KENWORTH	MHC KENWORTH-OLATHE	346750	112335 AP	01/24/2025	5-133-5-00-360	1-28	95988 FILTERS, CARTRIDGES	328.80	
232	MHC KENWORTH	MHC KENWORTH-OLATHE	346750	112335 AP	01/24/2025	5-133-5-00-360	1-28	95988 FILTERS, CARTRIDGES	69.70	
232	MHC KENWORTH	MHC KENWORTH-OLATHE	346750	112335 AP	01/24/2025	5-133-5-00-360	1-28	95988 FILTERS, CARTRIDGES	2,592.46	
232	MHC KENWORTH	MHC KENWORTH-OLATHE	346750	112335 AP	01/24/2025	5-133-5-00-360	1-28	95988 FILTERS, CARTRIDGES	237.84	
								*** VENDOR		
								232 TOTAL		5,986.84
781	NEW FRONTIER	NEW FRONTIER MATERIALS LLC	346754	112339 AP	01/24/2025	5-133-5-00-361	1-29	166713 RAP ROCK	72,376.29	
680	NEXTRAN CORP	NEXTRAN TRUCK CENTERS	346755	112340 AP	01/24/2025	5-133-5-00-360	1-30	684042700 BELTS, FAN CLUT	1,227.90	
1123	POMPMIDWEST EFT	POMP'S TIRE SERVICE INC	346774	404	01/24/2025	5-133-5-00-309	1-33	1960724 TIRES	235.00	
1123	POMPMIDWEST EFT	POMP'S TIRE SERVICE INC	346774	404	01/24/2025	5-133-5-00-309	1-33	1960724 TIRES	2,106.24	
1123	POMPMIDWEST EFT	POMP'S TIRE SERVICE INC	346774	404	01/24/2025	5-133-5-00-309	1-33	1960724 TIRES	1,855.88	

TYPES OF CHECKS SELECTED: * ALL TYPES

		P.O.NUMBER	CHECK#							
						*** VENDOR		1123 TOTAL		4,197.12
418	PREMIER TRUCK	PENSKE COMMERCIAL VEHICLES US	346758	112343 AP	01/24/2025	5-133-5-00-360	1-31 8052255000 MIRRORS, SWITCH		139.66	
418	PREMIER TRUCK	PENSKE COMMERCIAL VEHICLES US	346758	112343 AP	01/24/2025	5-133-5-00-360	1-31 8052255000 MIRRORS, SWITCH		641.58	
418	PREMIER TRUCK	PENSKE COMMERCIAL VEHICLES US	346758	112343 AP	01/24/2025	5-133-5-00-360	1-31 8052255000 MIRRORS, SWITCH		568.52	
418	PREMIER TRUCK	PENSKE COMMERCIAL VEHICLES US	346758	112343 AP	01/24/2025	5-133-5-00-360	1-31 8052255000 MIRRORS, SWITCH		1,603.86	
418	PREMIER TRUCK	PENSKE COMMERCIAL VEHICLES US	346758	112343 AP	01/24/2025	5-133-5-00-360	1-31 8052255000 MIRRORS, SWITCH		431.74	
418	PREMIER TRUCK	PENSKE COMMERCIAL VEHICLES US	346758	112343 AP	01/24/2025	5-133-5-00-360	1-31 8052255000 MIRRORS, SWITCH		21.76	
418	PREMIER TRUCK	PENSKE COMMERCIAL VEHICLES US	346758	112343 AP	01/24/2025	5-133-5-00-360	1-31 8052255000 MIRRORS, SWITCH		2,328.74	
418	PREMIER TRUCK	PENSKE COMMERCIAL VEHICLES US	346758	112343 AP	01/24/2025	5-133-5-00-360	1-31 8052255000 MIRRORS, SWITCH		357.49	
418	PREMIER TRUCK	PENSKE COMMERCIAL VEHICLES US	346758	112343 AP	01/24/2025	5-133-5-00-360	1-31 8052255000 MIRRORS, SWITCH		31.01	
418	PREMIER TRUCK	PENSKE COMMERCIAL VEHICLES US	346758	112343 AP	01/24/2025	5-133-5-00-360	1-32 8052255000 LATCHES, SWITC		277.74	
418	PREMIER TRUCK	PENSKE COMMERCIAL VEHICLES US	346758	112343 AP	01/24/2025	5-133-5-00-360	1-32 8052255000 LATCHES, SWITC		219.98	
418	PREMIER TRUCK	PENSKE COMMERCIAL VEHICLES US	346758	112343 AP	01/24/2025	5-133-5-00-360	1-32 8052255000 LATCHES, SWITC		863.48	
418	PREMIER TRUCK	PENSKE COMMERCIAL VEHICLES US	346758	112343 AP	01/24/2025	5-133-5-00-360	1-32 8052255000 LATCHES, SWITC		125.38	
						*** VENDOR		418 TOTAL		7,610.94
632	RWD 8	RURAL WATER DIST NO 8	346762	112347 AP	01/24/2025	5-133-5-00-214	1-17 WATER METERS AT CO SHOP		87.81	
632	RWD 8	RURAL WATER DIST NO 8	346762	112347 AP	01/24/2025	5-133-5-00-214	1-17 WATER METERS AT CO SHOP		239.89	
						*** VENDOR		632 TOTAL		327.70
575	US POSTAL SERVICE	US POSTAL SERVICE (QUADIENT-PO	346767	112352 AP	01/24/2025	5-133-5-00-301	1-10 DECEMBER POSTAGE		102.60	
392	VANDERBILT	VANDERBILT'S	346768	112353 AP	01/24/2025	5-133-5-00-364	1-34 10000127 SAFETY BOOTS V G		149.99	
19138	WEATHER OR	WEATHER OR NOT INC	346770	112355 AP	01/24/2025	5-133-5-00-213	1-35 DAILY WEATHER FORECASTS &		3,020.00	
						TOTAL FUND 133				153,626.43

28526	GUIDANCE C	THE GUIDANCE CENTER (TRAINING	346688	112273 AP	01/24/2025	5-135-5-00-200	25 HRS CRISIS & PLANNING (OCT		3,750.00	
28526	GUIDANCE C	THE GUIDANCE CENTER (TRAINING	346688	112273 AP	01/24/2025	5-135-5-00-200	25 HRS CRISIS/PLANNING DEC 202		3,750.00	
28526	GUIDANCE C	THE GUIDANCE CENTER (TRAINING	346688	112273 AP	01/24/2025	5-135-5-00-200	19.5 HRS INDIV/CRISIS, PAPERWO		2,925.00	
						*** VENDOR		28526 TOTAL		10,425.00
						TOTAL FUND 135				10,425.00

4938	BUILDING & GROUNDS	BUILDING & GROUNDS	346674	112259 AP	01/24/2025	5-136-5-00-203	COMMUNITY CORRECTIONS OCT-DEC		793.34	
4938	BUILDING & GROUNDS	BUILDING & GROUNDS	346674	112259 AP	01/24/2025	5-136-5-00-223	COMMUNITY CORRECTIONS OCT-DEC		793.33	
4938	BUILDING & GROUNDS	BUILDING & GROUNDS	346674	112259 AP	01/24/2025	5-136-5-00-245	COMMUNITY CORRECTIONS OCT-DEC		793.33	
						*** VENDOR		4938 TOTAL		2,380.00
648	COMMERCE BANK-COMMER	COMMERCE BANK-COMMERCIAL CARDS	346773	403	01/24/2025	5-136-5-00-206	COMM CORR RB:INMATE RXS, FOOD,		2.98-	
1708	SHERIFF - SECURITY	LEAV CO SHERIFF-SECURITY	346763	112348 AP	01/24/2025	5-136-5-00-205	OCT-DEC SECURITY COMM CORRECTI		183.17	
1708	SHERIFF - SECURITY	LEAV CO SHERIFF-SECURITY	346763	112348 AP	01/24/2025	5-136-5-00-225	OCT-DEC SECURITY COMM CORRECTI		183.16	
1708	SHERIFF - SECURITY	LEAV CO SHERIFF-SECURITY	346763	112348 AP	01/24/2025	5-136-5-00-245	OCT-DEC SECURITY COMM CORRECTI		183.16	
						*** VENDOR		1708 TOTAL		549.49
575	US POSTAL SERVICE	US POSTAL SERVICE (QUADIENT-PO	346767	112352 AP	01/24/2025	5-136-5-00-301	DECEMBER POSTAGE		3.11	
575	US POSTAL SERVICE	US POSTAL SERVICE (QUADIENT-PO	346767	112352 AP	01/24/2025	5-136-5-00-321	DECEMBER POSTAGE		3.10	
						*** VENDOR		575 TOTAL		6.21
						TOTAL FUND 136				2,932.72

4120	ACE IMAGEWEAR	AAA LAUNDRY & LINEN SUPPLY CO	346669	112254 AP	01/24/2025	5-137-5-00-203	1-3 4013-01993 UNFIROM RENTALS		97.52	
27474	HEAVYQUIP	HEAVYQUIP	346691	112276 AP	01/24/2025	5-137-5-00-320	1-4 084730-C GRADER BLADES		3,130.00	
27474	HEAVYQUIP	HEAVYQUIP	346691	112276 AP	01/24/2025	5-137-5-00-320	1-4 084730-C GRADER BLADES		1,550.00	
						*** VENDOR		27474 TOTAL		4,680.00
1123	POMPMIDWEST EFT	POMP'S TIRE SERVICE INC	346774	404	01/24/2025	5-137-5-00-321	1-5 1960724 TIRES		2,947.08	
1123	POMPMIDWEST EFT	POMP'S TIRE SERVICE INC	346774	404	01/24/2025	5-137-5-00-321	1-5 1960724 TIRES		2,947.08	
						*** VENDOR		1123 TOTAL		5,894.16
8028	POWERPLAN	MURPHY TRACTOR & EQUIP CO	346757	112342 AP	01/24/2025	5-137-5-00-320	1-6 88002-36463 MIRRORS, TANK,		377.74	
8028	POWERPLAN	MURPHY TRACTOR & EQUIP CO	346757	112342 AP	01/24/2025	5-137-5-00-320	1-6 88002-36463 MIRRORS, TANK,		309.29	

START DATE: 01/18/2025 END DATE: 01/24/2025

TYPES OF CHECKS SELECTED: * ALL TYPES

			P.O.NUMBER	CHECK#					
8028	POWERPLAN	MURPHY TRACTOR & EQUIP CO	346757	112342 AP	01/24/2025	5-137-5-00-320	1-6 88002-36463 MIRRORS, TANK,	60.20	
							*** VENDOR	8028 TOTAL	747.23
							TOTAL FUND 137		11,418.91
648	COMMERCE BANK-COMMER	COMMERCE BANK-COMMERCIAL CARDS	346773	403	01/24/2025	5-138-5-00-227	COMM CORR RB:INMATE RXS, FOOD,	2.38-	
							TOTAL FUND 138		2.38
2621	CAFE	TERRY BOOKER	346675	112260 AP	01/24/2025	5-145-5-00-256	MEALS RESERVED 1/1 - 1/10 & BA	234.00	
2621	CAFE	TERRY BOOKER	346675	112260 AP	01/24/2025	5-145-5-00-256	MEALS RESERVED 1/1 - 1/10 & BA	435.50	
2621	CAFE	TERRY BOOKER	346675	112260 AP	01/24/2025	5-145-5-00-256	MEALS RESERVED 1/1 - 1/10 & BA	5,908.50	
2621	CAFE	TERRY BOOKER	346675	112260 AP	01/24/2025	5-145-5-00-256	MEALS RESERVED 1/1 - 1/10 & BA	5,447.00	
							*** VENDOR	2621 TOTAL	12,025.00
							TOTAL FUND 145		12,025.00
648	COMMERCE BANK-COMMER	COMMERCE BANK-COMMERCIAL CARDS	346773	403	01/24/2025	5-146-5-00-301	CTS ANNEX:AH:OFFICE SUPPLIES	306.53	
575	US POSTAL SERVICE	US POSTAL SERVICE (QUADIENT-PO	346767	112352 AP	01/24/2025	5-146-5-00-302	DECEMBER POSTAGE	1,182.95	
							TOTAL FUND 146		1,489.48
648	COMMERCE BANK-COMMER	COMMERCE BANK-COMMERCIAL CARDS	346773	403	01/24/2025	5-160-5-00-202	SOLID WASTE TS:TNG,MAINT,OFC S	495.00	
648	COMMERCE BANK-COMMER	COMMERCE BANK-COMMERCIAL CARDS	346773	403	01/24/2025	5-160-5-00-213	SOLID WASTE TS:TNG,MAINT,OFC S	55.64	
648	COMMERCE BANK-COMMER	COMMERCE BANK-COMMERCIAL CARDS	346773	403	01/24/2025	5-160-5-00-301	SOLID WASTE TS:TNG,MAINT,OFC S	726.95	
648	COMMERCE BANK-COMMER	COMMERCE BANK-COMMERCIAL CARDS	346773	403	01/24/2025	5-160-5-00-301	SOLID WASTE TS:TNG,MAINT,OFC S	475.23-	
648	COMMERCE BANK-COMMER	COMMERCE BANK-COMMERCIAL CARDS	346773	403	01/24/2025	5-160-5-00-304	SOLID WASTE: JA:DIESEL ADDITIV	87.93	
648	COMMERCE BANK-COMMER	COMMERCE BANK-COMMERCIAL CARDS	346773	403	01/24/2025	5-160-5-00-305	SOLID WASTE TS:TNG,MAINT,OFC S	15.38	
648	COMMERCE BANK-COMMER	COMMERCE BANK-COMMERCIAL CARDS	346773	403	01/24/2025	5-160-5-00-305	SOLID WASTE TS:TNG,MAINT,OFC S	44.18	
							*** VENDOR	648 TOTAL	949.85
10	DH PACE	DH PACE SYSTEMS INTERGRATION	346681	112266 AP	01/24/2025	4-160-5-00-213	SOLID WASTE NORTH/SOUTH DOOR R	2,109.50	
22605	HINCKLEY S	HINCKLEY SPRINGS	346693	112278 AP	01/24/2025	5-160-5-00-263	586990012811238 DRINKING WATER	152.39	
9271	LANSING CI	CITY OF LANSING	346746	112331 AP	01/24/2025	5-160-5-00-210	SOLID WASTE - CITY SEWER	34.80	
461	LEAV CO CO	LEAV CO COOP	346747	112332 AP	01/24/2025	5-160-5-00-201	LEASOL CONSUMPTIVE	1,168.99	
17209	REDDI SERV	REDDI SERVICES	346761	112346 AP	01/24/2025	5-160-5-00-263	JANUARY SEPTIC TANK SERVICE SO	350.00	
575	US POSTAL SERVICE	US POSTAL SERVICE (QUADIENT-PO	346767	112352 AP	01/24/2025	5-160-5-00-201	DECEMBER POSTAGE	35.47	
							TOTAL FUND 160		4,801.00
845	MEGAKC CORP	MEGAKC CORPORATION	346657	10288 AP	01/23/2025	5-172-5-00-301	ARPA275 3.1 CULV GRP 2	55,120.86	
							TOTAL FUND 172		55,120.86
2138	ABSOLUTE COMFORT TEC	ABSOLUTE COMFORT TECHNOLOGIES	346668	112253 AP	01/24/2025	5-174-5-00-210	HVAC MAINT FT LEAV TOWER SITE	301.00	
8020	APCO INT'L	APCO INTERNATIONAL	346671	112256 AP	01/24/2025	5-174-5-00-202	232848I PUBLIC SAFETY COURSE -	35.00	
							TOTAL FUND 174		336.00
2059	MIDWEST OFFICE TECH	MIDWEST OFFICE TECHNOLOGY INC	346752	112337 AP	01/24/2025	5-198-5-18-301	LC02_K COPIER CONTRACT BASE	94.50	
							TOTAL FUND 198		94.50
648	COMMERCE BANK-COMMER	COMMERCE BANK-COMMERCIAL CARDS	346773	403	01/24/2025	5-215-5-14-401	BG CH EXT REPAIR,JC MAINT, HD/	2,000.00	
							TOTAL FUND 215		2,000.00
760	AETNA VOL	AETNA LIFE INSURANCE COMPANY	346670	112255 AP	01/24/2025	5-510-2-00-958	A5905-0001 JANUARY VOLUNTARY P	2,207.61	
760	AETNA VOL	AETNA LIFE INSURANCE COMPANY	346670	112255 AP	01/24/2025	5-510-2-00-958	A5905-0001 JANUARY VOLUNTARY P	3,581.52	
760	AETNA VOL	AETNA LIFE INSURANCE COMPANY	346670	112255 AP	01/24/2025	5-510-2-00-958	A5905-0001 JANUARY VOLUNTARY P	2,175.16	
							*** VENDOR	760 TOTAL	7,964.29
268	GEN DIGITAL-LIFELOCK	GEN DIGITAL, INC.	346686	112271 AP	01/24/2025	5-510-2-00-941	1247233 JANUARY PREMIUMS LIFE	2,227.52	

warrants by vendor

TYPES OF CHECKS SELECTED: * ALL TYPES

P.O.NUMBER CHECK#

TOTAL FUND 510 10,191.81

TOTAL ALL CHECKS 628,928.66

TYPES OF CHECKS SELECTED: * ALL TYPES

FUND SUMMARY

001	GENERAL	359,569.18
106	OPIOID SETTLEMENT	83.99
108	COUNTY HEALTH	1,496.58
117	CO CLERK TECHNOLOGY	22.86
119	ROD TECHNOLOGY	30.00
126	COMM CORR ADULT	2,965.89
127	COMM CORR ADULT NON GRANT	300.83
133	ROAD & BRIDGE	153,626.43
135	COMM CORR OPIOID	10,425.00
136	COMM CORR JUVENILE	2,932.72
137	LOCAL SERVICE ROAD & BRIDGE	11,418.91
138	JUV INTAKE & ASSESSMENT	2.38-
145	COUNCIL ON AGING	12,025.00
146	COUNTY TREASURER SPECIAL	1,489.48
160	SOLID WASTE MANAGEMENT	4,801.00
172	AMERICAN RECOVERY PLAN	55,120.86
174	911	336.00
198	SPECIAL GRANTS	94.50
215	CAPITAL IMPROVEMENTS	2,000.00
510	PAYROLL CLEARING	10,191.81
	TOTAL ALL FUNDS	628,928.66

Consent Agenda 1/29/2025
cks 01/18 - 01/24

Leavenworth County Request for Board Action

Date: January 23, 2025
To: Board of County Commissioners
From: Mark Loughry

Additional Reviews as needed:

Budget Review **Administrator Review**

Action Requested: Approve the updated public comment policy.

Recommendation: Approval.

Analysis: Commissioners, as directed I have updated the Public Comment Policy to reflect the direction given by the Commission on January 22, 2025. The time for public comment on agenda items before the meeting was extended to 25 minutes from 15 minutes. Each speaker will be allowed five minutes of time instead of three.

Alternatives: Continue with the current policy

Budgetary Impact:

No budgetary impact

SUBJECT	ISSUED BY	EFFECTIVE DATE	REVISION
Public Comment Policy	BOCC	2-1-2025	

STATEMENT:

The Leavenworth Board of County Commissioners (BOCC) recognizes the importance of an engaged public. In order to encourage and allow meaningful interaction the Commission understands the need to have specific policies in place.

Therefore, the BOCC wishes to implement the following policy. Any current policy or practice in place that would be in conflict with this policy is repealed.

POLICY:

Public Comment shall be limited to 25 minutes at the beginning of each meeting and opened again at the end of the meeting after all regularly scheduled agenda items. Comments at the start of the meeting shall be limited to items on the agenda and limited to five minutes per person. Comments at the end of the meeting shall be open to any topic of general interest to the Board of County Commissioners and limited to five minutes per person. There should be no expectation of interaction by the Commission during this time.

Everyone wishing to make comments either on items on the agenda or not are encouraged to provide their comments in writing no later than 8:00 AM the Monday immediately preceding the meeting. These comments will be included in the agenda packet for everyone to access and review. This allows the Commission to have time to fully consider input and request follow up if needed prior to the meeting.

During times when the Courthouse is closed to the general public anyone wishing to make public comment will provide their comments in writing no later than 8:00 AM the Monday immediately preceding the meeting. The comment will be included and distributed with the normal meeting packet.

Chairmen, Board of County Commissioners

1-29-2025
Date of Adoption

Leavenworth County Request for Board Action

Date: January 8 2025

To: Board of County Commissioners

From: Bob Weber, County Appraiser

Department Head Approval: RJW

Additional Reviews as needed:

Budget Review Administrator Review Legal Review

Action Requested: Approval of personal services six-year contract with Eagleview to provide 3 Inch resolution ortho and oblique imagery to the county.

Recommendation: County Appraiser recommends approval of personal services contract with Eagleview to provide 3 Inch resolution ortho and oblique imagery to the county for \$55,998.00 per year for six years.

Analysis: Currently the county contracts biannually for 6-inch pixel resolution ortho images for the base layer of the GIS map at a cost of \$25,000 per flight. The Eagleview contract would provide three flights of 3-inch resolution ortho images and 3-inch oblique images. The images would be taken in 2025, 2027 and 2029 under the contract. The payments for the contract would be \$55,998.00 every year for six years starting in 2025 and ending in 2029. This is a six-year contract but language in Exhibit A allows for "Termination for Convenience". The terms allow for the county to terminate the contract in whole or part, for convenience of the Customer with at least a 30-day notice. The county would be obligated to pay the remainder of fees or costs for any project delivered or performed under such termination. Bids from two other vendors were considered both came in higher than the Eagleview contract.

Oblique images are taken at a 45-degree angle of every building. The images can be rotated to see all four sides of a building.

The County Appraiser is required to reinspect every property every six years. The Department of Revenue Property Valuation Division (PVD) Procedural Compliance Guidelines allow counties to use "digital imaging and remote sensing technology in lieu of certain field inspections". These oblique images meet the requirements to substitute for field inspections and are currently used in a number of counties in this manner.

In addition to the County and Deputy County appraiser the appraiser's office has six staff appraiser positions one of those positions is not filled. It takes two years and many appraisal classes to train an appraiser. In the current market it has been very difficult to get all the positions filled with qualified personnel. The Oblique imaging would allow for the elimination of one full time position and still accomplish all field inspections in a timely manner. This would also allow for the elimination of one vehicle from the fleet of six vehicles used by the Appraiser's office. With an average cost for salary and benefits for an appraiser's position at \$84,000 replacing one position with the oblique images would save the county money without counting training and transportation costs.

TerriLois Mashburn, the register of deeds has pledged to pay for the Eagleview contract out of the tech fund for as long as sufficient funds are available.

Alternatives: Fill Vacant appraiser position.

Budgetary Impact:

- Not Applicable Not Applicable
- Budgeted item with available funds
- Non-Budgeted item with available funds through prioritization
- Non-Budgeted item with additional funds requested

Total Amount Requested:

Additional Attachments: Eagleview contract, Eagle Order Form



CUSTOMER NAME:	Leavenworth County, KS
ATTN:	Soma San
CUSTOMER ADDRESS:	300 Walnut Street, Suite 030 Leavenworth, Kansas 66048
CUSTOMER PHONE:	(913) 758-6780
CUSTOMER E-MAIL:	ssan@leavenworthcounty.gov

MASTER SERVICES AGREEMENT

This Master Services Agreement (“Agreement”) is entered into as of the date of last signature below (the “Effective Date”) by and between the Customer identified above (“Customer”) and Pictometry International Corp. dba EagleView, a corporation formed under the laws of the State of Delaware, with a place of business at 25 Methodist Hill Drive, Rochester, NY 14623 (“EagleView”). Customer and EagleView may be referred to individually as “Party” and, collectively, as “Parties.” EagleView will provide the Products and Services in accordance with and subject to the conditions of this Agreement during the applicable Term.

GENERAL TERMS AND CONDITIONS

1. DEFINITIONS

1.1. **“Account”** means an account created for Customer by EagleView for the purpose of providing access to the Products and Services.

1.2. **“Activation”** means the point in time when Customer has access to an Account and the Products and Services are available to Customer.

1.3. **“Authorized User”** means: (i) any employee or elected or appointed official of the Customer authorized by Customer to use the Products and Services; (ii) any additional users as may be defined in an Order Form (such as governmental subdivisions and their employees or elected or appointed officials) all of whom are considered to be agents of Customer for the purposes of Section 1.3; or (iii) a contractor of Customer, so long as Customer gives written notice of its intent to use such contractor to EagleView prior to being granted access to the Products and Services and, unless EagleView expressly waives such requirement for any individual, has entered into a written agreement with EagleView authorizing such access.

1.4. **“Confidential Information”** means any non-public information that is identified as or would be reasonably understood to be confidential and/or proprietary as disclosed by a Party (“Discloser”) to another Party (“Recipient”). Confidential Information of EagleView includes, but is not limited to: (a) the Products and Services including any related software code and Documentation; (b) EagleView’s roadmaps, product plans, product designs, architecture, technology and technical information, security audit reviews, business and marketing plans, and business processes, however disclosed. Confidential Information will not include information that was (a) at the time of disclosure, through no fault of the Recipient, already known and generally available to the public; (b) at the time of disclosure to Recipient already rightfully known to the Recipient without any obligation of confidentiality; (c) disclosed to the Recipient by a third party who had the right to make the disclosure without any confidentiality restrictions; or (d) independently developed by the Recipient without access to or use of the Discloser’s Confidential Information.

1.5. **“Documentation”** means the materials describing the features and functions of the Products and Services as may be updated from time to time by EagleView.

1.6. **“Fee”** means the fees charged by EagleView for the Products and Services as identified in an Order Form or an invoice issued by EagleView.

1.7. **“Intellectual Property Rights”** means all worldwide intellectual property rights whether registered or unregistered including copyrights, patents, patent applications, trademarks, service marks, trade secrets, and all other proprietary rights.



1.8. **“Malware”** means any software program or code intended to harm, destroy, interfere with, corrupt, or cause undesired effects on program files, data, or other information, executable code, or application software macros.

1.9. **“Order Form”** means a mutually agreeable order signed and dated by both Parties describing the Products and Services purchased by Customer. The Parties may enter into several Order Forms with each Order Form made part of this Agreement. In the event of a conflict between the terms of this Agreement and an Order Form, the Order Form will prevail; provided that notwithstanding anything to the contrary, no Order Form shall exist or be effective except to the extent it is governed by this Agreement.

1.10. **“Products and Services”** means EagleView’s proprietary products, services and content, whether or not identified in an Order Form, developed and owned or licensed by EagleView, its Affiliates (defined as its directors, officers, employees, agents, representatives, advisors, and persons or entities which are controlled by or are under common control with EagleView), and/or their licensors.

2. ACCESS AND USE OF THE PRODUCTS AND SERVICES

2.1. **Access to the Products and Services.** Subject to Customer’s compliance with the terms of this Agreement, EagleView hereby grants to Customer the right to access and use the Products and Services identified on an Order Form(s) for its internal business purpose on a limited, revocable, non-exclusive, non-transferable basis in accordance with the scope of use identified in the Order Form. Unless a different term of the license grant to Products and Services is set forth in an Order Form, the right to access and use the Products and Services for its internal business purpose during the term of any Order Form(s) is the only right granted to Customer under this Agreement and any Order Form(s). EagleView will have no liability for any loss or damage arising from Customer’s failure to comply with the terms of this Agreement. EagleView will provide Customer a primary administrator Account for managing and granting access to its Authorized Users. Customer will be responsible for activating Authorized Users through use of the Account. Customer and its Authorized Users are responsible for maintaining the confidentiality of all passwords.

2.2. **Access Restrictions.** Access by Customer and its Authorized Users to the Products and Services is subject to the following conditions:

2.2.1. Customer will not access the Products and Services or Confidential Information of EagleView in a way that might adversely affect the security, stability, performance, or functions of the Products and Services.

2.2.2. Customer will not directly or indirectly: (a) resell or sublicense the Products and Services, (b) modify, disassemble, decompress, reverse compile, reverse assemble, reverse engineer, or translate any portion of the software related to the Products and Services; (c) create derivative works from the Products and Services; (d) use the Products and Services in violation of applicable law or the rights of others; (e) perform any vulnerability or penetration testing of the Products and Services; (f) cause harm in any way to the Products and Services or cause Malware to harm the Products and Services; (g) work around the Products and Services’ technical limitations; (h) remove any proprietary notices from the Products and Services, software related to the Products and Services, documentation or any other EagleView materials furnished or made available hereunder; (i) access the software related to the Products and Services in order to build a competitive product or service; or (j) copy any features, functions or graphics of the software related to the Products and Services.

2.2.3. Customer will not use the Products and Services in connection with any data that: (a) may create a risk of harm or loss to any person or property; (b) constitutes or contributes to a crime or tort; (c) is illegal, unlawful, harmful, pornographic, defamatory, infringing, or invasive of personal privacy or publicity rights; (d) contains any information that Customer does not have the right to use; or (e) use the Products and Services, or any software or documentation related to the Products and Services, in violation of export control laws and regulations.



2.2.4. Customer and its Authorized Users shall only use the Products and Services for the use and purpose set out in this Agreement, and for no other purpose.

2.2.5. EagleView may suspend the Products and Services if EagleView determines, in its reasonable discretion, that suspension is necessary to protect Customer or the Products and Services from operational, security, or other material risk, or if the suspension is ordered by a court or other tribunal. In such event(s), EagleView will provide notice of suspension to Customer as soon as reasonably practicable.

2.3. **Account Use.** Customer is responsible for maintaining and keeping confidential its Account information, including passwords, usernames, and email addresses. If Customer becomes aware of: (i) any violation of the terms of this Agreement by an Authorized User or unauthorized access to an Account, or (ii) any compromise to an Account including unauthorized access to or disclosure of any Account information, passwords, usernames or login credentials, then Customer must promptly suspend any relevant access and notify EagleView.

2.4. **Reservation of Rights.** Except for the limited rights expressly granted herein, EagleView and its Affiliates retain all right, title and interest in all Intellectual Property Rights and technology related to EagleView's proprietary Products and Services. Customer will preserve and keep intact all EagleView copyright, patent, and/or trademark notices presented in connection with the Products and Services. Customer will not assert any implied or other rights in or to any of EagleView's Intellectual Property Rights or Products and Services. From time to time, Customer may provide suggestions, ideas, enhancement requests, or other information on its use of the Products and Services ("Feedback"). Customer agrees that EagleView will have all right, title, and interest to use such Feedback without any restrictions and without any payment or other compensation to Customer.

3. PAYMENT

3.1. **Fees.** Customer will pay undisputed Fees within thirty (30) days of receipt of invoice. EagleView will have the right to assess a late payment charge on any overdue amounts equal to the lesser of: (i) one and one-half percent (1.5%) per month, or (ii) the maximum rate allowed by applicable law. Additional or different payment terms may be set forth in the Order Form. All Fees paid pursuant to this Agreement and any applicable Order Form are non-refundable and all Products and Services ordered pursuant to an Order Form are non-cancelable, unless expressly stated to the contrary in the Order Form. If any Fees are overdue by more than thirty (30) days, EagleView may, without limiting its other rights and remedies, suspend the Products and Services until such amounts are paid in full, provided that, EagleView will give Customer at least ten (10) days' prior notice that its account is overdue.

3.2. **Pricing Changes.** If any Order Form is subject to renewal or extension, automatic or otherwise, EagleView may adjust the pricing for any Products and Services upon any renewal or extension of an Order Form by providing notice thereof at least ninety (90) days prior to the date for such renewal or extension.

3.3. **Taxes.** The Fees do not include any levies, duties excise, sales, use, value added or other taxes, tariffs, or duties that may apply to the Products and Services ("Taxes"). Customer is responsible for paying all Taxes associated with its purchases hereunder. If EagleView has the legal obligation to collect Taxes from Customer, Customer will pay that amount to EagleView unless Customer provides EagleView with a valid tax exemption certificate authorized by the applicable taxing authority prior to billing. For clarity, EagleView is solely responsible for taxes assessable against it based on its income, property, and employees.

4. TERM AND TERMINATION

4.1. **Term.** The term of this Agreement will commence on the Effective Date and will remain in effect for so long as there exists an open Order Form and for a period of twelve (12) months thereafter ("Term"). After expiration or early termination, Customer will not have any access to content or any Products and Services.

4.2. **Termination; Suspension.** Either Party may terminate this Agreement or any Order Form upon written notice to the other Party if: (i) the non-terminating Party materially breaches this Agreement or any Order Form and fails to cure such breach within thirty (30) days of delivery of written notice; or (ii) if the other Party becomes the subject of a petition in bankruptcy or any other proceeding relating to insolvency, receivership, liquidation, or



assignment for the benefit of creditors. EagleView may suspend access to the Products and Services in the event Customer is in material breach of this Agreement and such breach has not been cured within thirty (30) days' written notice to Customer. In the event of suspension due to Customer's material breach of this Agreement, Customer will remain liable for all Fees applicable to the Term that would have been paid had access to the Products and Services not been suspended.

4.3. Effect of Termination on Fees: EagleView Breach. In the event this Agreement is terminated by Customer for a material breach by EagleView, (a) where EagleView has fully delivered imagery to Customer, no refund of fees will be made, or (b) where Customer, at the time of termination, is accessing on-line imagery and data access and/or software related to any Products and Services, EagleView will refund any unused prorated, prepaid fees for the Products and Services.

4.4. Effect of Termination on Fees: Customer Breach. In the event this Agreement is terminated by EagleView for a material breach by Customer or due to section 4.2 (ii) applying, Customer will be responsible for all Fees and Taxes under any current Order Form(s).

4.5. Survival. Upon any expiration or termination of any Order Form or this Agreement, the following sections will survive with respect thereto: 2.4 (Reservation of Rights), 3 (Payment), 5 (Confidentiality), 7 (Indemnification), 8 (Limitation of Liability), and 9 (General Provisions).

5. CONFIDENTIALITY

5.1. Obligations. Each Party will hold the other Party's Confidential Information in confidence with at least as much care as it holds its own Confidential Information, and neither Party will disclose any of the other Party's Confidential Information to any third party. Each Party may use the Confidential Information solely for purposes of its performance under this Agreement, and may disclose such information to its employees, subcontractors and professional advisors only on a need-to-know basis, provided that such employees, subcontractors and professional advisors are bound by obligations of confidentiality at least as restrictive as those set forth in this Agreement.

5.2. Required Disclosure. The Recipient may disclose Confidential Information as required by court order, Freedom of Information Act request, any request under the Kansas Open Records Act, or otherwise by law, provided that it gives the Discloser prior written notice of such disclosure to the extent reasonably possible and legally permitted as well as reasonable assistance if Discloser seeks a protective order to prevent the disclosure. Any disclosure pursuant to this Section 5.2 will be restricted to include the least amount of Confidential Information necessary to comply with the law or order. All costs incurred by the Recipient in connection with complying with such order will be paid solely by the Recipient.

6. WARRANTIES

6.1. Mutual Warranties. Each Party represents and warrants to the other Party that: (i) it is an organization duly organized, validly existing and in good standing under the laws of the jurisdiction of its formation, has all requisite power and authority to carry on its business and to own and operate its properties and assets; and (ii) the individual signing this Master Services Agreement and any Order Forms has the requisite authority to bind the party to this Agreement and the Order Form, respectively.

6.2. EagleView Warranty. EagleView warrants that (i) it will provide the Products and Services with commercially reasonable care and skill; and (ii) the Products and Services will conform to the then-current Documentation in all material respects. In the event of a breach of this warranty, Customer's sole and exclusive remedy will be as described in Section 4.3 Payments Upon Termination.

6.3. Disclaimer. EXCEPT FOR EXPRESS WARRANTIES SET FORTH IN THIS AGREEMENT, EAGLEVIEW MAKES NO ADDITIONAL REPRESENTATION OR WARRANTY OF ANY KIND, WHETHER EXPRESS, IMPLIED IN FACT OR BY OPERATION OF LAW, OR STATUTORY, AS TO ANY MATTER WHATSOEVER. EAGLEVIEW EXPRESSLY DISCLAIMS ALL IMPLIED WARRANTIES OF MERCHANTABILITY, FITNESS FOR A PARTICULAR PURPOSE AND NON-INFRINGEMENT. EAGLEVIEW DOES NOT WARRANT THAT THE PRODUCTS AND SERVICES (INCLUDING ANY



SUPPORT SERVICES) WILL BE ERROR FREE, WILL MEET CUSTOMER'S REQUIREMENTS, OR WILL BE TIMELY OR SECURE. CUSTOMER WILL NOT HAVE THE RIGHT TO MAKE OR PASS ON ANY REPRESENTATIONS OR WARRANTY ON BEHALF OF CUSTOMER TO ANY THIRD PARTY. TO THE MAXIMUM EXTENT PERMITTED BY LAW, THE PRODUCTS AND SERVICES AND SUPPORT SERVICES ARE PROVIDED "AS IS."

7. INDEMNIFICATION

7.1. EagleView Indemnification. EagleView will defend Customer against any claim, demand, suit or proceeding made by a third party alleging that the Products and Services infringes the intellectual property rights of such third party and will pay all costs or damages that are finally awarded by a court of competent jurisdiction (including reasonable attorneys' fees) or agreed to in a written settlement signed by EagleView; provided, however, that Customer will: (i) notify EagleView in writing within ten (10) business days of its receipt of notice of the claim, (ii) give EagleView sole control of the defense and settlement of the claim (except that EagleView will not settle any claim that results in liability or an admission of liability by Customer without Customer's prior written consent), and (iii) provide EagleView with all reasonable assistance, information, and authority necessary to perform EagleView's obligations under this paragraph. Notwithstanding the foregoing, EagleView will have no liability for any claim of infringement or misappropriation to the extent such claim arises from: (i) use of the Products and Services in combination with materials including software, hardware, or content not furnished by EagleView; or (ii) Customer's breach of this Agreement.

7.2. Remedies. In the event the Products and Services are held or is believed by EagleView to infringe or misappropriate any Intellectual Property Rights of a third party, EagleView will have the option, at its expense, to: (i) replace the Products and Service with a non-infringing equivalent, (ii) modify the Products and Services to be non-infringing, (iii) obtain for Customer a license to continue using the Products and Services; or (iv) terminate this Agreement or any relevant Order Form and refund any prepaid, prorated fees for the remainder of the Term. The foregoing remedies constitute Customer's sole and exclusive remedies and EagleView's sole liability with respect to any third-party infringement claim.

8. LIMITATION OF LIABILITY

8.1. Consequential Damages. TO THE EXTENT PERMITTED BY LAW, IN NO EVENT WILL EITHER PARTY OR ITS AFFILIATES BE LIABLE TO THE OTHER FOR ANY INDIRECT, INCIDENTAL, CONSEQUENTIAL, COVER, BUSINESS INTERRUPTION, SPECIAL, OR PUNITIVE DAMAGES OF ANY KIND OR NATURE, INCLUDING, BUT NOT LIMITED TO, LOSS OF USE, DATA, PROFITS, REVENUE, OR GOODWILL, WHETHER AN ACTION IS BASED IN CONTRACT, TORT, OR OTHERWISE, REGARDLESS OF WHETHER EITHER PARTY HAS BEEN ADVISED OF THE POSSIBILITY OF SUCH DAMAGES.

8.2. Limitation of Liability. EXCLUDING EITHER PARTY'S INDEMNIFICATION OBLIGATIONS PURSUANT TO SECTION 7, TO THE EXTENT PERMITTED BY LAW, THE AGGREGATE AND CUMULATIVE LIABILITY OF EITHER PARTY INCLUDING ALL THEIR AFFILIATES REGARDLESS OF THE FORM OF ACTION, WHETHER IN CONTRACT OR TORT (INCLUDING BUT NOT LIMITED TO NEGLIGENCE) WILL IN NO EVENT EXCEED THE TOTAL AMOUNT OF FEES PAID AND PAYABLE BY CUSTOMER IN THE TWELVE MONTHS PRECEDING THE ACTIONS GIVING RISE TO THE CLAIM.

9. GENERAL PROVISIONS

9.1. Export Laws. The Products and Services and derivatives thereof may be subject to export laws and regulations of the United States and other jurisdictions. EagleView and Customer each represent that it is not named on any U.S. government denied-party list. Customer will not permit any user to access, use, export, reexport, or transfer, directly or indirectly, any Products and Services or content in a U.S.-embargoed country or region (including but not limited to Cuba, Iran, North Korea, Sudan, Syria, Crimea, or Russia) or in violation of any U.S. export law or regulation.



9.2. No Third-Party Beneficiaries. Except as specifically identified in this Agreement, nothing in this Agreement is intended to confer upon any person other than the Parties and their respective successors or permitted assigns, any rights, remedies, obligations, or liabilities whatsoever.

9.3. Independent Contractors. Nothing contained in this Agreement will be deemed or construed as creating a joint venture or partnership between any of the Parties hereto. Neither Party will have the power or authority to control the activities or operations of the other. At all times, the status of the Parties will be that of independent contractors.

9.4. Force Majeure. Except with respect to Customer's payment obligations, each Party will be excused from performance under this Agreement, will not be deemed to be in breach hereof, and will have no liability to the other Party whatsoever if either party is prevented from performing any of its obligations hereunder, in whole or in part, as a result of a Force Majeure Event. A "Force Majeure Event" means an event or occurrence beyond the control of the nonperforming Party, such as an act of God or of the public enemy, embargo or other act of government in either its sovereign or contractual capacity, government regulation, travel ban or request, court order, civil disturbance, terrorism, war, quarantine restriction, epidemic, virus, fire, weather, flood, accident, strike, slowdown, delay in transportation, electrical power outage, interruption or degradation in electronic communications systems, inability to obtain necessary labor, materials or manufacturing facilities, and other similar events. In the event of any delay resulting from a Force Majeure Event, any date of delivery hereunder will be extended for a period equal to the time lost because of the delay.

9.5. Security Assessment. Upon reasonable request, EagleView will assist Customer in its EagleView security risk assessments by completing forms and providing reports that provide Customer with generally available information relating to EagleView's information security practices. Such information will include high level overviews of implemented security measures, such as access controls, encryption, or other means, where appropriate, and will provide details relating to how Customer's Confidential Information is disclosed, accessed, processed, and stored (as applicable).

9.6. Assignment. Neither Party may assign any of its rights or obligations hereunder, whether by operation of law or otherwise, without the other Party's prior written consent (not to be unreasonably withheld); provided, however, either Party may assign this Agreement in its entirety (including all Order Forms), without the other Party's consent to its Affiliate or in connection with a merger, acquisition, corporate reorganization, or sale of all or substantially all of its assets. Subject to the foregoing, this Agreement will bind and inure to the benefit of the Parties and their respective successors and permitted assigns.

9.7. Governing Law. This Agreement will be governed by the laws of the state the Customer is located in without regard to conflict of law principles. The Parties agree that any claims, legal proceedings, disputes and litigation arising out of or in connection with this Agreement will be brought solely in the state or federal courts located in the jurisdiction in which the Customer is based.

9.8. Severability & Waiver. The failure of either Party to exercise any right or the waiver by either Party of any breach, will not prevent a subsequent exercise of such right or be deemed a waiver of any subsequent breach of the same, or any other provision of this Agreement. All waivers must be in writing and signed by the Party waiving its rights. If any section of this Agreement is held to be invalid or unenforceable, the remaining sections of this Agreement will remain in force to the extent feasible.

9.9. Notices. Notwithstanding anything to the contrary in this Agreement, notices and other communications may be given or made pursuant to this Agreement via electronic mail. Notwithstanding the foregoing, any notice concerning a material breach, violation, or termination hereof must be in writing and will be delivered: (a) by certified or registered mail; or (b) by an internationally recognized express courier or overnight delivery service. All written notices or other written communications to EagleView will be provided to the address listed above and addressed to: ATTENTION: LEGAL DEPARTMENT. All written notices to Customer will be sent to: Mr. Weber and to ATTENTION COUNTY COUNSELOR and will be deemed to have been duly given when delivered personally, when deposited in the U.S. mail, certified or registered mail, or when deposited with an overnight courier or delivery service. With respect to notices and other communications regarding EagleView's privacy



policy, support plan, or other similar provisions, such notices will be deemed given when posted to EagleView's website (www.eagleview.com) or e-mailed to the Customer's Account administrator(s).

9.10. Execution in Counterparts. This Agreement may be executed in one or more counterparts, each of which will be deemed to be an original and all of which together will constitute only one agreement. The execution and delivery of counterparts of this Agreement by electronic mail, electronic form (including execution by way of an electronic or other signature stamp), website submission, facsimile, or by original manual signature, regardless of the means or any such variation in pagination or appearance will be binding upon the Parties executing this Agreement.

9.11. Order of Precedence. In the event of any conflict, or inconsistency among the terms and conditions contained in documents comprising the Agreement, such conflict or inconsistency shall be resolved according to the following order of precedence, with the first document listed having the highest precedence: any exhibits in the order of their attachment (for example, Exhibit A, then Exhibit B, etc.), the Order Form, and this Agreement.

9.12. Entire Agreement. This Agreement, along with the Order Form(s), and any attached exhibits, which are all incorporated into this Agreement by reference, contains the entire understanding of the Parties with respect to the subject matter hereof and supersedes all prior agreements, oral or written, and all other communications between the Parties relating to such subject matter. The Parties agree that any term or condition stated in a Customer purchase order is null and void. This Agreement may not be amended or modified except by mutual written agreement. In the event that any court holds any provision of this Agreement as null, void, or otherwise ineffective or invalid, such provision will be deemed to be restated to reflect as nearly as possible the original intentions of the Parties in accordance with applicable law, and the remaining provisions will remain in full force and effect. The unenforceability of any provision of this Agreement will not affect the validity of the remaining provisions hereof. A waiver by either Party of a breach or failure to perform hereunder will not constitute a waiver of any subsequent breach or failure.

[Signature page follows]



CUSTOMER	EAGLEVIEW
LEAVENWORTH COUNTY, KS	PICTOMETRY INTERNATIONAL CORP. DBA EAGLEVIEW
	a Delaware corporation
SIGNATURE:	SIGNATURE:
NAME:	NAME:
TITLE:	TITLE:
EXECUTION DATE:	EXECUTION DATE:



EXHIBIT A
AGREEMENT NON-STANDARD TERMS AND CONDITIONS

The terms and conditions of this Exhibit A include references to or language for all mutually agreed upon changes to the terms and conditions of this Agreement. In the event of any conflict, or inconsistency among the terms and conditions contained in documents comprising the Agreement, such conflict or inconsistency shall be resolved according to the following order of precedence, with the first document listed having the highest precedence: any exhibits in the order of their attachment (for example, Exhibit A, then Exhibit B, etc.), the Order Form, and this Agreement.

Anti-Discrimination Clause: EagleView agrees: (a) to comply with the Kansas Act Against Discrimination (K.S.A. 44-1001 et seq.) and the Kansas Age Discrimination in Employment Act (K.S.A. 44-1111 et seq.) and the applicable provisions of the Americans With Disabilities Act (42 U.S.C. 12101 et seq.) (ADA), and Kansas Executive Order No. 19-02, and to not discriminate against any person because of race, color, gender, sexual orientation, gender identity or expression, religion, national origin, ancestry, age, military or veteran status, disability status, marital or family status, genetic information, or political affiliation that is unrelated to the person's ability to reasonably perform the duties of a particular job or position; (b) to include in all solicitations or advertisements for employees, the phrase "equal opportunity employer"; (c) to comply with the reporting requirements set out at K.S.A. 44-1031 and K.S.A. 44-1116; (d) to include those provisions in every subcontract or purchase order so that they are binding upon such subcontractor or vendor; (e) that a failure to comply with the reporting requirements of (c) above or if EagleView is found guilty of any violation of such acts by the Kansas Human Rights Commission, such violation shall constitute a breach of contract and the agreement may be cancelled, terminated or suspended, in whole or in part; (f) if it is determined that EagleView has violated applicable provisions of ADA, such violation shall constitute a breach of contract and the agreement may be cancelled, terminated or suspended, in whole or in part, by the Customer.

EagleView agrees to comply with all applicable state and federal anti-discrimination laws.

Termination for Convenience. The Customer may, when the interests of the Customer so require, terminate this contract in whole or in part, for the convenience of the Customer and shall be responsible to pay the remainder of fees or costs for any project delivered or performed. The Customer shall give written notice of the termination to EagleView specifying the part of the contract terminated at least 30 days prior to the termination effective date

EagleView shall incur no further obligations in connection with the terminated work and on the date set in the notice of termination EagleView will stop work to the extent specified. Customer shall pay EagleView the following amounts:

All costs and expenses incurred by EagleView for Products and Services delivered to the Customer and for flights already flown prior to EagleView's receipt of the notice of termination, plus a reasonable profit for said work.

[Remainder of page intentionally left blank]



ORDER FORM

CUSTOMER NAME:	Leavenworth County, KS
ORDER FORM TERM (DURATION):	6 year(s)
ORDER FORM EFFECTIVE DATE:	
MASTER SERVICES AGREEMENT EFFECTIVE DATE:	
<p>This Order Form is governed by the terms and conditions of the Master Services Agreement with the effective date listed between Pictometry International Corp. dba EagleView and Leavenworth County, KS.</p>	

ORDER #
LC-10010271

BILL TO
Leavenworth County, KS
Bob Weber
300 Walnut Street
Leavenworth, Kansas 66048
(913) 684-0440
bweber@leavenworthcounty.org

SHIP TO
Leavenworth County, KS
Soma San
300 Walnut Street, Suite 030
Leavenworth, Kansas 66048
(913) 758-6780
ssan@leavenworthcounty.gov

CUSTOMER ID	SALES REP	REFRESH FREQUENCY
A1217987	Ryan Poots	Biennial

REFRESH 1		
QTY	PRODUCT NAME	PRODUCT DESCRIPTION
6	EagleView Cloud - Capture History	Includes access to historical ortho and oblique frame imagery from the EagleView archive. Quantity represents the number of calendar years of archive imagery available in EagleView Cloud.
1	EagleView Cloud - Disaster Response Program	Includes access to the EagleView Disaster Response Program which offers flights after an emergency or disaster. Refer to the attached detailed description of the Disaster Response Program.
1	EagleView Cloud - Early Access	Provides entitlement to imagery from counties neighboring the imagery AOI as part of EagleView Cloud. Also provides entitlement to Early Access to refreshed imagery captures which allows authorized users to use new imagery immediately following its preliminary processing and quality control checks and prior to its final processing. Early Access imagery will become available incrementally as it is processed, and it will remain available until final, fully processed imagery is made available through other means.
1	EagleView Cloud - Authorized Subdivisions	Extends the ability for a contracting county or non-state consortium of counties the ability to authorize access to their EagleView Cloud organization to any political unit or subdivision located totally or substantially within their boundary.



1	EagleView Cloud - Comprehensive Integration Bundle	Provides activation of integrations between the EagleView Cloud platform and compatible customer environments (including compatible CAMA providers, 911/PSAP, Cityworks, and ESRI/GIS) and via the Integrated Web Application.
1	EagleView Cloud - Software - Plus	Provides an unlimited number of authorized users the ability to login and access the EagleView Cloud software and analytics via the web-based EagleView Cloud platform. This software provides a robust compliment of tools for engaging with imagery as well as additional project and collaboration tools, and access to mobile application. Requires the purchase of an EagleView - Imagery entitlement.
1	EagleView Cloud - Physical Delivery - Combined Orthomosaic	Provides a single combined orthomosaic from multiple capture GSDs with the best GSD preferred. Files to be provided in industry standard formats selectable by the customer with delivery made via online download or physically via a hard drive media.
500	EagleView Cloud - Imagery - 3in	Provides entitlement to the EagleView Platform, a secure hosted infrastructure and access to EagleView enabled workflow, analytics, and high-resolution imagery to dramatically improve efficiency for government agencies. Includes regular refreshes of ortho and oblique imagery at the GSD and frequency specified. Target capture season subject to weather and airspace permissions. Services term commences on date of activation.
1	EagleView Cloud - Physical Delivery - Ortho & Oblique Frames - 3in	Provides an offline copy of the individual ortho and oblique image frames in Pictometry Warehouse format at the GSD specified in imagery refresh. Delivery includes one copy of Pictometry Electronic Field Study (EFS) software, latest version, on the storage media specified herein, and access to download updated versions of the EFS Licensed Software for a period of one years from the initial date of shipment of the EFS software, along with a copy of the updated documentation.

REFRESH 2		
QTY	PRODUCT NAME	PRODUCT DESCRIPTION
6	EagleView Cloud - Capture History	Includes access to historical ortho and oblique frame imagery from the EagleView archive. Quantity represents the number of calendar years of archive imagery available in EagleView Cloud.
1	EagleView Cloud - Disaster Response Program	Includes access to the EagleView Disaster Response Program which offers flights after an emergency or disaster. Refer to the attached detailed description of the Disaster Response Program.
1	EagleView Cloud - Early Access	Provides entitlement to imagery from counties neighboring the imagery AOI as part of EagleView Cloud. Also provides entitlement to Early Access to refreshed imagery captures which allows authorized users to use new imagery immediately following its preliminary processing and quality control checks and prior to its final processing. Early Access imagery will become available incrementally as it is processed, and it will remain available until final, fully processed imagery is made available through other means.
1	EagleView Cloud - Authorized Subdivisions	Extends the ability for a contracting county or non-state consortium of counties the ability to authorize access to their EagleView Cloud organization to any political unit or subdivision located totally or substantially within their boundary.



1	EagleView Cloud - Comprehensive Integration Bundle	Provides activation of integrations between the EagleView Cloud platform and compatible customer environments (including compatible CAMA providers, 911/PSAP, Cityworks, and ESRI/GIS) and via the Integrated Web Application.
1	EagleView Cloud - Software - Plus	Provides an unlimited number of authorized users the ability to login and access the EagleView Cloud software and analytics via the web-based EagleView Cloud platform. This software provides a robust compliment of tools for engaging with imagery as well as additional project and collaboration tools, and access to mobile application. Requires the purchase of an EagleView - Imagery entitlement.
1	EagleView Cloud - Physical Delivery - Combined Orthomosaic	Provides a single combined orthomosaic from multiple capture GSDs with the best GSD preferred. Files to be provided in industry standard formats selectable by the customer with delivery made via online download or physically via a hard drive media.
500	EagleView Cloud - Imagery - 3in	Provides entitlement to the EagleView Platform, a secure hosted infrastructure and access to EagleView enabled workflow, analytics, and high-resolution imagery to dramatically improve efficiency for government agencies. Includes regular refreshes of ortho and oblique imagery at the GSD and frequency specified. Target capture season subject to weather and airspace permissions. Services term commences on date of activation.
1	EagleView Cloud - Physical Delivery - Ortho & Oblique Frames - 3in	Provides an offline copy of the individual ortho and oblique image frames in Pictometry Warehouse format at the GSD specified in imagery refresh. Delivery includes one copy of Pictometry Electronic Field Study (EFS) software, latest version, on the storage media specified herein, and access to download updated versions of the EFS Licensed Software for a period of one years from the initial date of shipment of the EFS software, along with a copy of the updated documentation.

REFRESH 3

QTY	PRODUCT NAME	PRODUCT DESCRIPTION
6	EagleView Cloud - Capture History	Includes access to historical ortho and oblique frame imagery from the EagleView archive. Quantity represents the number of calendar years of archive imagery available in EagleView Cloud.
1	EagleView Cloud - Disaster Response Program	Includes access to the EagleView Disaster Response Program which offers flights after an emergency or disaster. Refer to the attached detailed description of the Disaster Response Program.
1	EagleView Cloud - Early Access	Provides entitlement to imagery from counties neighboring the imagery AOI as part of EagleView Cloud. Also provides entitlement to Early Access to refreshed imagery captures which allows authorized users to use new imagery immediately following its preliminary processing and quality control checks and prior to its final processing. Early Access imagery will become available incrementally as it is processed, and it will remain available until final, fully processed imagery is made available through other means.
1	EagleView Cloud - Authorized Subdivisions	Extends the ability for a contracting county or non-state consortium of counties the ability to authorize access to their EagleView Cloud organization to any political unit or subdivision located totally or substantially within their boundary.



1	EagleView Cloud - Comprehensive Integration Bundle	Provides activation of integrations between the EagleView Cloud platform and compatible customer environments (including compatible CAMA providers, 911/PSAP, Cityworks, and ESRI/GIS) and via the Integrated Web Application.
1	EagleView Cloud - Software - Plus	Provides an unlimited number of authorized users the ability to login and access the EagleView Cloud software and analytics via the web-based EagleView Cloud platform. This software provides a robust compliment of tools for engaging with imagery as well as additional project and collaboration tools, and access to mobile application. Requires the purchase of an EagleView - Imagery entitlement.
1	EagleView Cloud - Physical Delivery - Combined Orthomosaic	Provides a single combined orthomosaic from multiple capture GSDs with the best GSD preferred. Files to be provided in industry standard formats selectable by the customer with delivery made via online download or physically via a hard drive media.
500	EagleView Cloud - Imagery - 3in	Provides entitlement to the EagleView Platform, a secure hosted infrastructure and access to EagleView enabled workflow, analytics, and high-resolution imagery to dramatically improve efficiency for government agencies. Includes regular refreshes of ortho and oblique imagery at the GSD and frequency specified. Target capture season subject to weather and airspace permissions. Services term commences on date of activation.
1	EagleView Cloud - Physical Delivery - Ortho & Oblique Frames - 3in	Provides an offline copy of the individual ortho and oblique image frames in Pictometry Warehouse format at the GSD specified in imagery refresh. Delivery includes one copy of Pictometry Electronic Field Study (EFS) software, latest version, on the storage media specified herein, and access to download updated versions of the EFS Licensed Software for a period of one years from the initial date of shipment of the EFS software, along with a copy of the updated documentation.

FEES

Due at Initial Activation of Services	\$55,998.00
Due at First Anniversary of Initial Activation of Services	\$55,998.00
Due at Second Anniversary of Initial Activation of Services	\$55,998.00
Due at Third Anniversary of Initial Activation of Services	\$55,998.00
Due at Fourth Anniversary of Initial Activation of Services	\$55,998.00
Due at Fifth Anniversary of Initial Activation of Services	\$55,998.00

Non-Appropriation of Funds: Notwithstanding anything herein to the contrary, in the event that the funds due for subsequent projects and related deliverables under the terms and conditions of this Agreement are not lawfully appropriated, the following provisions shall apply:

- a. Customer shall provide EagleView with written documentation of non-appropriation of funds from its funding source prior to commencement of a subsequent project;
- b. This Agreement shall remain in full force and effect, however commencement of the subsequent project shall be deemed postponed until such time as funds for the subsequent project have been appropriated and all other sums due under the terms and conditions of this Agreement have been paid by Customer. In the event that the postponement exceeds eighteen months, EagleView reserves the right to terminate any and all obligations with respect to the postponed project and all subsequent projects included in this Agreement; and



c. If Customer, or any party authorized under the terms and conditions of this Agreement to use the licensed products set forth in Section A, is in possession of licensed products for which EagleView has not been fully compensated in accordance with the payment terms of this Agreement, Customer or such authorized party shall immediately cease use of those licensed products, purge those licensed products from all Customer and authorized party computers, and return those licensed products to EagleView.

Ownership of Delivered Orthogonal Imagery to Customer: Customer shall own the copies of the orthogonal imagery delivered to Customer by EagleView pursuant to this Order Form. EagleView shall own all copies of the orthogonal imagery, including all formats in which such copies are maintained (including, but not limited to, electronic), that remain in EagleView's possession and reserves all rights thereto. All inventions, discoveries, improvements, technology, designs, works of authorship, patents, copyrights, technical information, data, databases, software, business information, and other information used to create the orthogonal imagery remain the sole and exclusive property of EagleView. All oblique imagery, software, online services and online content, or other deliverables not specifically mentioned above which are produced by EagleView pursuant to this Order Form remain the sole and exclusive property of EagleView.

PRODUCT PARAMETERS

Disaster Response Program (“DRP”)

If EagleView Cloud - Disaster Response Program is listed in the above product table, then this section applies to this Order Form. If EagleView Cloud - Disaster Response Program is not listed in the above product table, then this section does not apply to this Order Form.

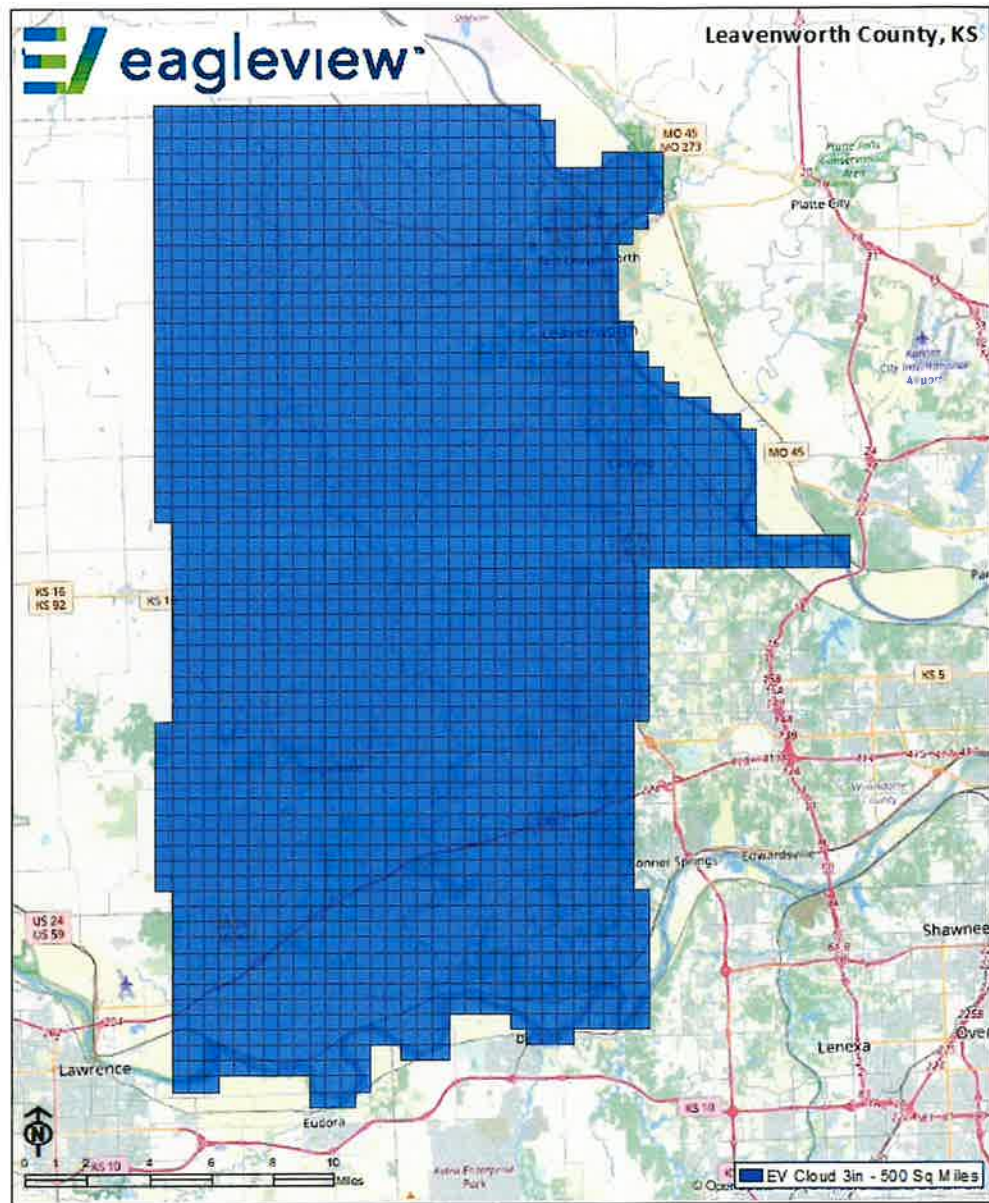
This Order Form includes eligibility for the DRP described below so long as the customer remains under an active services agreement and in good standing with EagleView. Imagery captured through DRP will be captured “as-is”.

A. Disaster Coverage Imagery at No Additional Charge – EagleView will, upon request of Customer and at no additional charge, provide standard quality imagery of up to 200 square miles of affected areas (as determined by EagleView) upon the occurrence of any of the following events during any period Customer is eligible for DRP:

- Hurricane: areas affected by hurricanes of Category 2 and higher.
- Tornado: areas affected by tornados rated EF4 and higher.
- Terrorist: areas affected by damage from terrorist attack.
- Earthquake: areas affected by damage to critical infrastructure resulting from earthquakes measured at 6.0 or higher on the Richter scale.
- Tsunami: areas affected by damage to critical infrastructure resulting from tsunamis.

B. Discounted Rate – Coverage for areas affected by the events set forth above exceeding 200 square miles will be, subject to EagleView resource availability, offered to Customer at the then-current DRP rates. Also, coverage for areas affected by hurricanes below Category II, tornadoes below EF4 or earthquakes rated below 6.0 on the Richter scale, flooding meeting or exceeding the major flood stage, wildfires impacting population centers, or other disasters as agreed to between the customer and EagleView, will be, subject to EagleView resource availability, offered to Customer at the then current DRP rates.

AOI(S) IF APPLICABLE



Contains information from OpenStreetMap, which is made available here under the Open Database License (ODBL). OpenStreetMap data by itself

[Signature page follows]



This Order Form is incorporated by reference into the Master Services Agreement between EagleView and Customer.

CUSTOMER	EAGLEVIEW
LEAVENWORTH COUNTY, KS	PICTOMETRY INTERNATIONAL CORP. DBA EAGLEVIEW
	a Delaware corporation
SIGNATURE:	SIGNATURE:
NAME:	NAME:
TITLE:	TITLE:
EXECUTION DATE:	EXECUTION DATE:

Terra Cotta and Substitutes

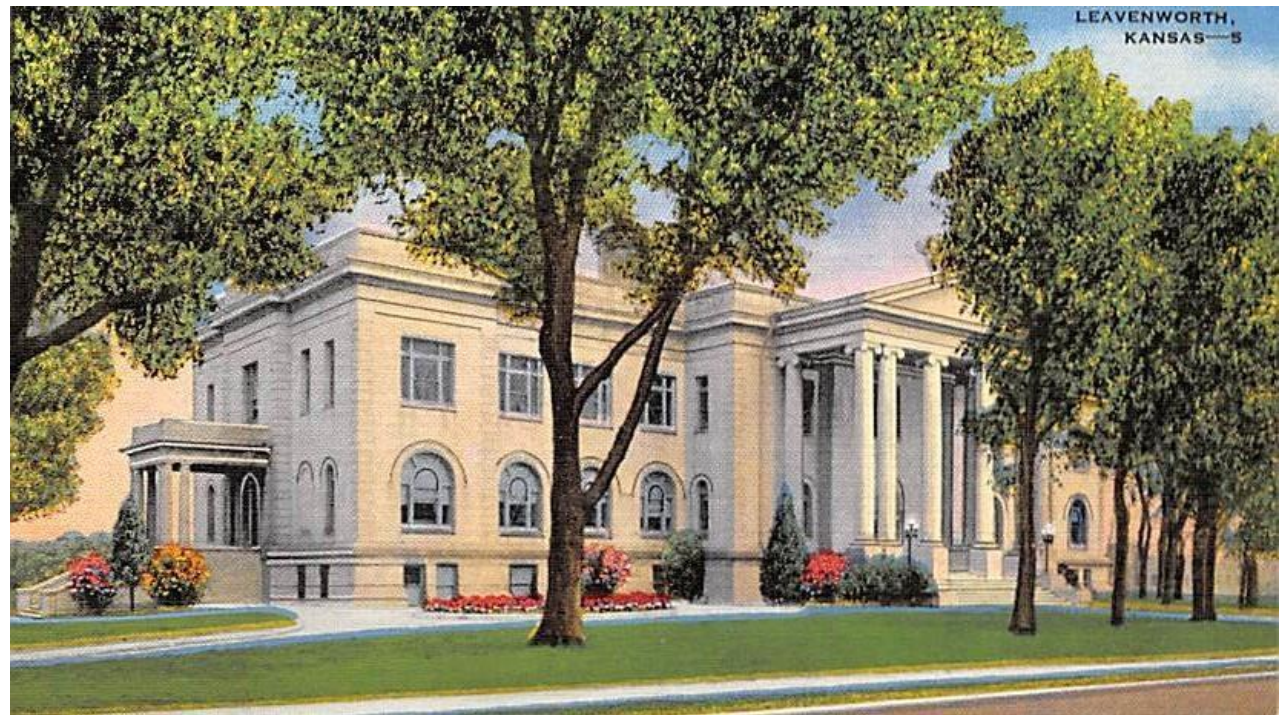
Historic Leavenworth County Courthouse

January 29, 2025

Overview of Leavenworth Courthouse

- First iteration of courthouse was completed in the 1874, designed by State Architect John G. Haskell, who also designed the Kansas State Capitol, among many other municipal buildings in Kansas.
- The 1874 courthouse burned in 1911, gutting the building but sparing the walls.
- The courthouse was rebuilt using the original walls, applying a “veneer” of Phenix marble and Terra Cotta trim over the brick walls.
- The building has been renovated in 1951, 1977, 1980 and, it is believed, 2007.





3 Photos: Historic Postcards

Summary of Exterior Damage

- Early last year, a deteriorated corner of the terra cotta cornice detached and fell from the building, revealing corroded metal anchors and supports.
- Our design team was brought in to survey every block of the cornice, as well as survey other damaged masonry, and provide preliminary recommendations.
- Additional cornice material has been removed since our survey, and we believe the same issue is occurring at several other similar corners on the building.
- Ground level protection has been installed to protect pedestrians from falling pieces, and reroofing project is set to begin soon to secure the building envelope.
- We are preparing to begin our rehabilitation drawings, but we first need to determine the appropriate material for replacing the existing failing elements.



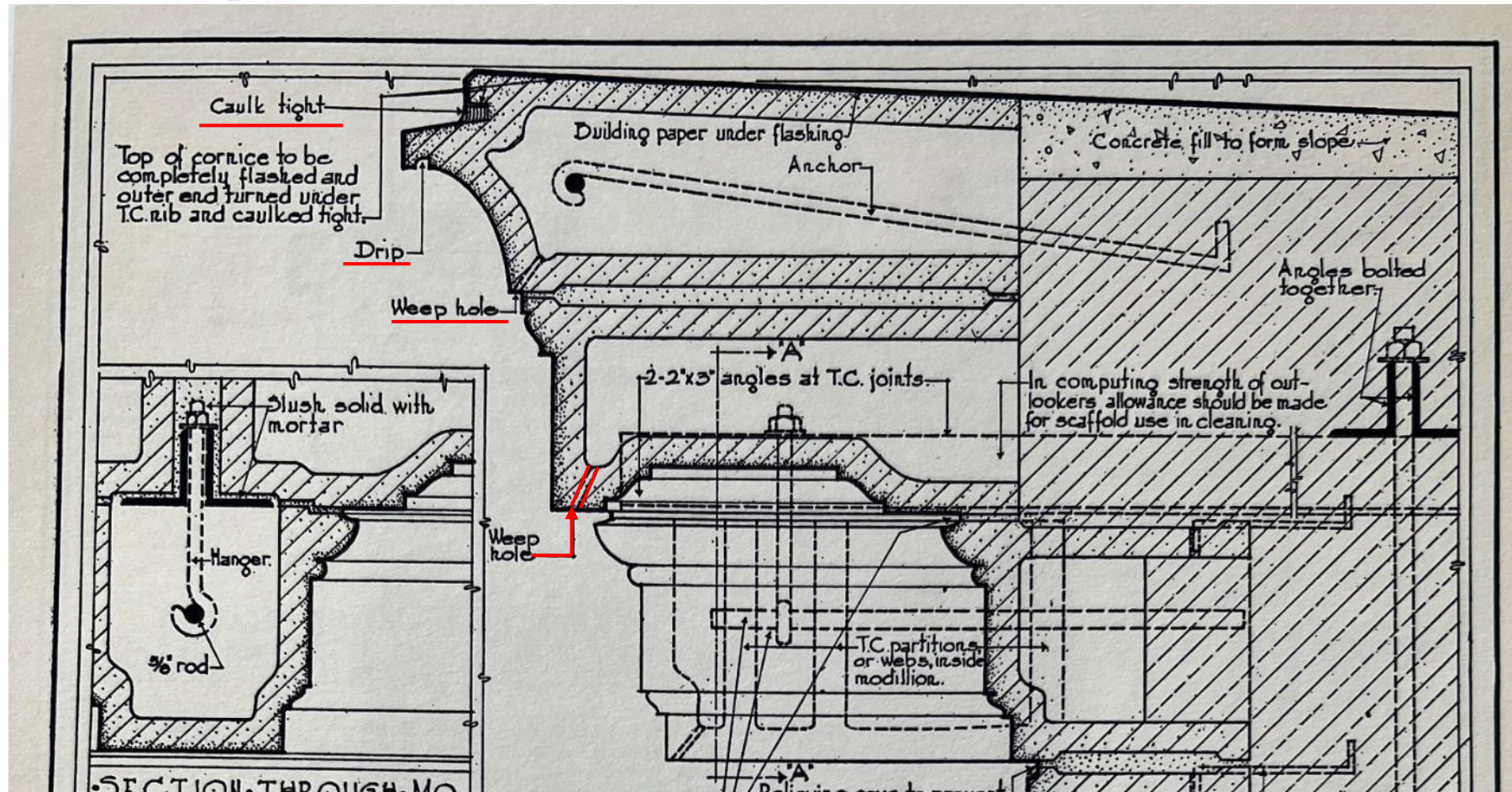


Water Damage

- Visible in photo on right depicts moisture leaking out the bottom of the terra cotta assembly of the Courthouse.
- This indicates water is likely flowing between the terra cotta, and the sublayer of brick.
- The metal anchors and supports holding the terracotta in place will corrode and fail when exposed to water.



Example Detail



What needs to be replaced?

- Many pieces identified as damaged during our survey will need to be replaced and have been identified as such for gathering estimates.
- However, it is impossible to know exactly how many pieces have damaged anchoring or other underlying problems which are not visible from the exterior.
- Because we can't know the underlying conditions, it would be risky to replace only the visibly damaged pieces, while leaving visually undamaged pieces in place.
- It would be much less risky to replace the terracotta band in full.
- All corroded metal anchors and supports that hold the terracotta to the building structure will need to be replaced.



| Background of Terra Cotta



Brief History of Terra Cotta

- Terra Cotta is an ancient material, but the modern architectural version of the terra cotta arose in the late 19th century in America, in conjunction with the rise of steel and concrete structural systems.
- Initially used to economically imitate stone at vast scales, terra cotta was later popularly used for creating elaborate color schemes.
- Was also prized for fireproof and waterproof properties.
- Was employed in some of the most significant buildings in American architectural history.





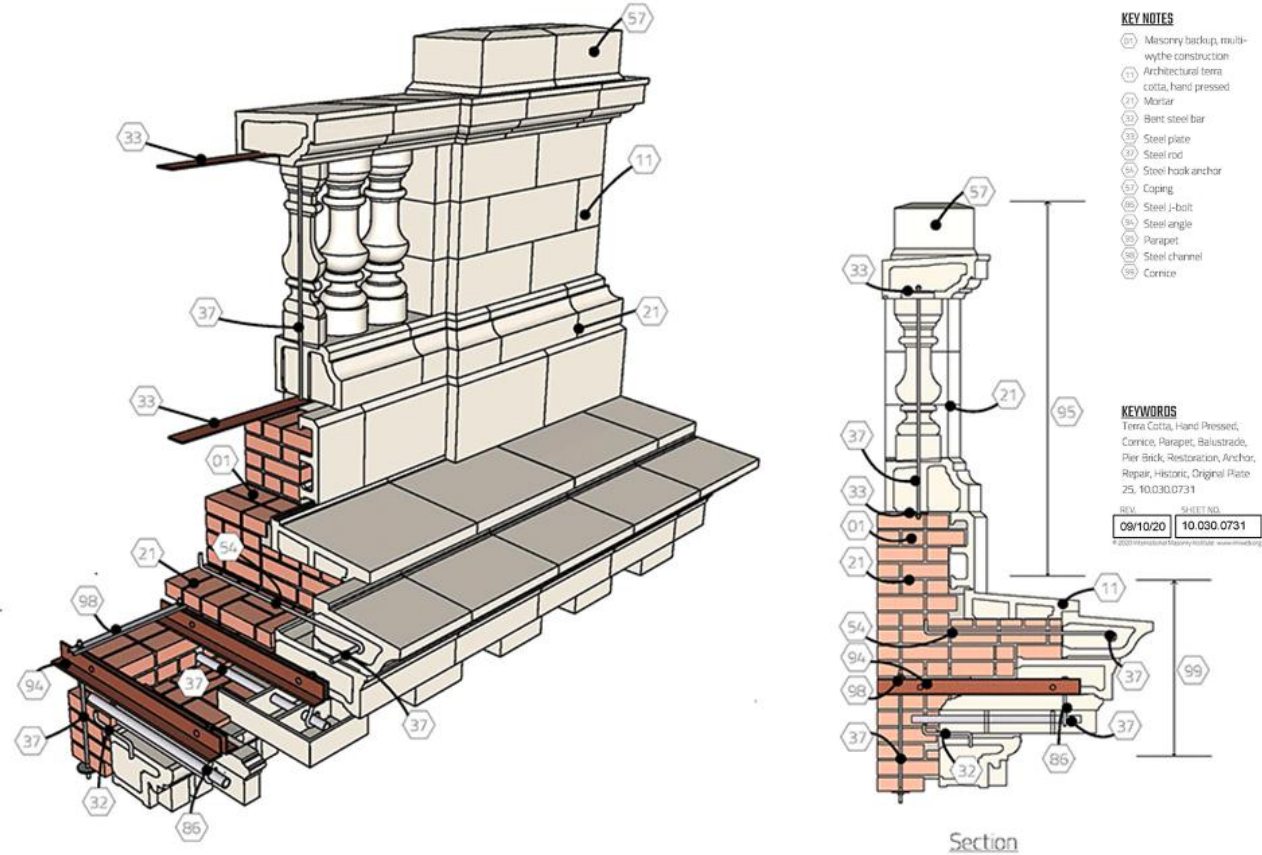
Common Causes of Failure in Terra Cotta

- Water penetration from faulty drainage at roofs can reach steel anchoring and cause it to corrode and oxidize, which can cause rust jacking.
- Rust jacking is when the rusted material expands, cracking the surrounding ceramic, loosening pieces. This is the most common reason for terra cotta to fail.
- Water infiltration can also cause the terra cotta to spall, which is when the exterior glazing or underlying bisque flakes off.
- Trapping water with inappropriate uses of sealants can exacerbate these issues.
- Plugging routes water exits from, such as weep holes. The current coating has plugged these weep holes.
- It should be noted that the material on Leavenworth Courthouse is more than 110 years old and is in active failure mode due to the presence of moisture within the



Example Details

- Detail on the right is a graphical representation of standard historic terra cotta cornice construction.
- The variety of anchors and channels is visible. These would all have been made of ferrous metals that are prone to rusting.



Note: This Terra Cotta Detail is a modern rendering of the original detail shown in Plate 25 of Terra Cotta Standard Construction, published by the National Terra Cotta Society in 1914.

TITLE	SCALE
Cornice and Parapet - Original Plate 25	None



Replacement Materials Overview



Materials

Questions to ask

- Can it serve a structural function?
- How is the material affected by moisture?
- Can it reproduce the surface texture of the original?
- Can an adequate match of the surface (color and texture) be achieved with a coating?
- Is its shrinkage in curing low enough to allow it to be molded from existing units?
- Can matching color be achieved without a coating and with UV stability?



Materials

Questions to ask

- Is a coating required?
- If it is not self-supporting, is it lightweight enough to be supported by an underlying framework?
- Can multiple original units be replicated with a single replacement piece?
- Where thermal movement is different from the original material, how will joints accommodate?
- Is the material combustible?
- If any existing coated terracotta remains in place, what needs to be done to it so that it will match the new material aesthetically and in performance?



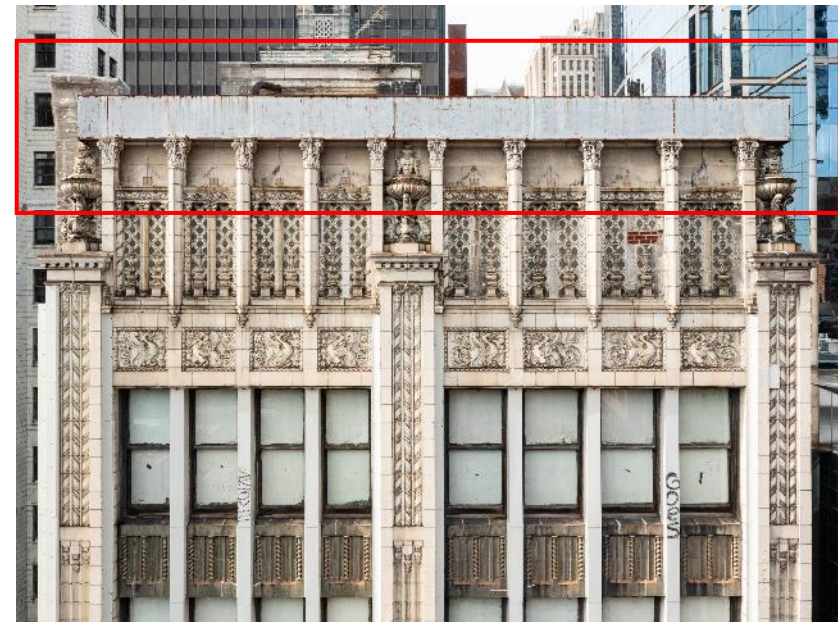
What Purpose Does a Cornice Serve?

- Cornices on monumental buildings are not necessarily purely decorative.
- Cornices function like eaves, by sheltering the exterior walls of the building from direct rainfall. Instead of water only draining down the face of the building, the water is also shed from the cornice and out, away from the face of the building.
- SHPO would very likely not approve tax credits for masonry rehabilitation if no attempt is made to match the existing cornice.
- Design team recommends using a material of the same weight. Lighter materials may face new forces, such as uplift from wind.



Non Historic Option

- Cheapest option, simplest structural system.
- Still requires demolition and removal costs of existing material, and labor involved in installing a functionally adequate replacement.
- Tax credits for this project, which have already been applied for, would likely be canceled. 30% of qualified expenses would be forfeited.
- The building would be reduced in architectural, aesthetic and historical value.





Replacement Terra Cotta

- + Works best within existing systems
- + Visually identical to historic treatment
- + Highly durable
- + Fireproof
- + Minimal joint and anchoring redesign
- - Often most Expensive
- - Longest lead times



GFRP

- + Lightweight
- + Usually moderate Cost
- + Rapid Production
- + Good initial Esthetics
- - Thermal Expansion Mismatch
- - Requires redesigned anchoring and joints
- - May tend to weather poorly



| Replacement Terra Cotta



Replacement terra cotta

- Terra cotta manufacturing and anchoring has improved enormously since the 1900s.





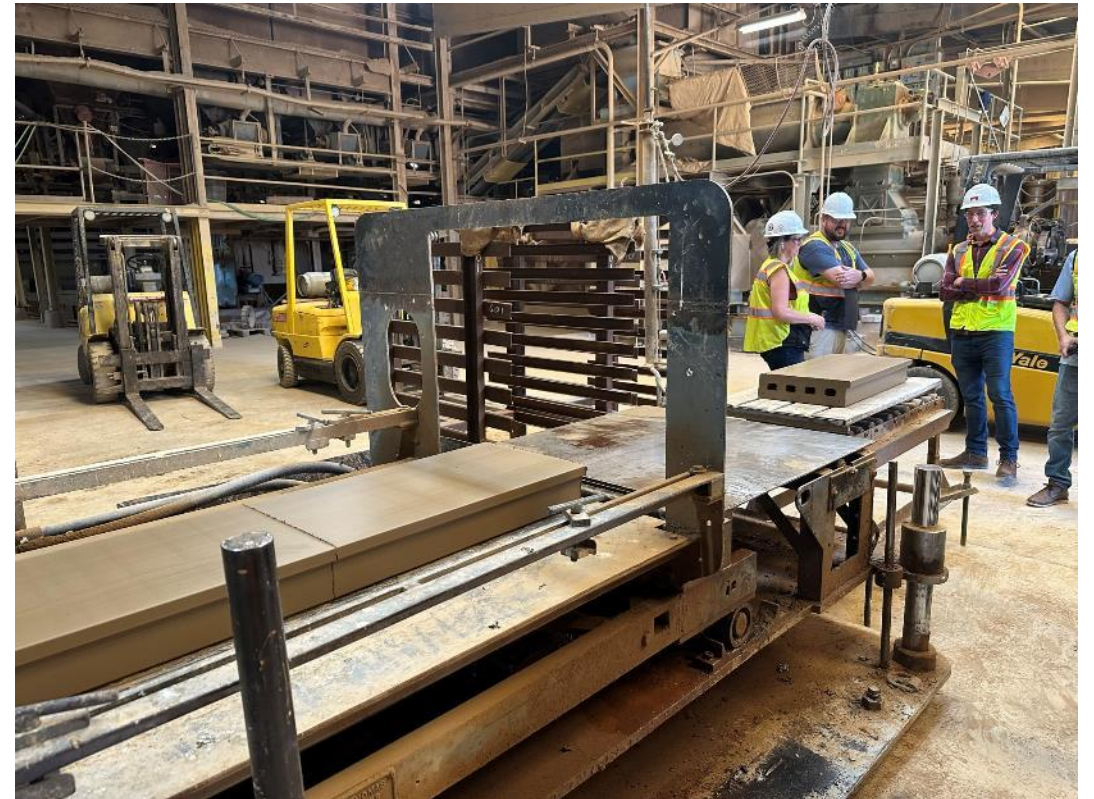
Replacement terra cotta

- The greatest improvement between new and historic terra cotta is the anchorage, which is now constructed of stainless steel, which reduces or eliminates the danger of rust jacking.
- Attachments themselves are also far better engineered than in the past, using stainless steel straps and angles instead of thin hooks and rods.



Replacement terra cotta

- Lead times and costs often higher than other materials, though that can change depending on number of molds.
- Cost and time may be based on complexity of form and decoration.
- Non-sculpted pieces, like those found in most of Leavenworth Courthouse's cornice, could be simply extruded, which may reduce lead times and costs compared to more complicated projects.



Glass Fiber Reinforced Concrete (GFRC)

GFRC

- Made of Portland cement, aggregate, water, glass fibers and additives.
- Most common substitute for terra cotta.
- Typically no structural capacity.
- Not easy to match existing finishes.
- Can be 10%-20% cheaper than terra cotta.



GFRC

- The material can look poor. Can look “fake” and can stain dramatically.
- However, with care it can replicate materials with high precision.



GFRC

- There will be pronounced lines of difference between the GFRC and remaining masonry.
- GFRC needs an underlying metal skeleton to support itself.
- This will be a new structural condition, which will need to be designed around.



Resources

- NPS Preservation Tech Notes: Masonry #2
<https://www.nps.gov/orgs/1739/upload/tech-note-masonry-02-terra-cotta-cornice.pdf>
- NPS Preservation brief 7 Preservation of Terra Cotta
<https://www.nps.gov/orgs/1739/upload/preservation-brief-07-terra-cotta.pdf>
- NPS Preservation brief 16 Substitute materials
<https://www.nps.gov/orgs/1739/upload/preservation-brief-16-substitute-materials-2023.pdf>
- National Register Nomination LV Courthouse
<https://npgallery.nps.gov/GetAsset/bbab17b7-471d-46b5-bf44-d7f8c4045b11>



Questions



COUNTY OF LEAVENWORTH SOLID WASTE DEPARTMENT

Quarterly Report January 29, 2025 - Year End 2024 Totals

Tonnage/Materials

- 42438 customers serviced.
- 32471 tons processed.
- 16169 tons of MSW (municipal solid waste).
- 15217 tons of C & D (construction and demolition).
- 7 tons of free brush.
- 926 tons total brush processed.
- 1226 free tires.
- 74 tons total tires processed.
- 12 tons of Special Waste (Grit)

Annual Clean-up

- 785 Residents – 392 tons

KDHE

- The annual composting permit is renewed until 7/31/25.
- The annual transfer station permit is renewed until 7/31/25.
- The 2022–5-Year Solid Waste Management Plan Update is due 3/12/2027.
- The annual stormwater permit is renewed until 1/28/26.
- The annual HHW permit is renewed until 7/31/25.
- HHW pickup is due 7/3/25.
- KDHE Annual inspection due anytime.

HHW

- Had 1483 appointments.

MEETINGS/TRAINING

- Staff completed required 8-hour HHW recertification.
- New hires completed required 24-hour HHW and received certification.
- MARC meetings.
- Solid Waste Committee meetings.
- Held Monthly safety meetings.
- County safety committee meetings.
- Administrator budget meetings.
- BOCC ¼ reports.
- NAHMMA vape and Battery-in-device Webinars
- KOR/KDHE Kansas Waste Reduction Conference
- Kerit inspection completed.
- Department Head meetings.
- Cross training.
- Safety first testing.

MISCELLANEOUS

- 42 Bikes recycled.
- Participated in health assessment.
- One work comp employee continuing light duty.
- Had approach that was pushing into inbound scale repaired.
- Moved arm at inbound scale for more efficient operation.
- Installed an area drain the outbound scale to eliminate ponding.

2024	Pounds	Tonnage
Aluminum	2,000	1
B-Car	4700	2.35
Co-Mingle	70,680	35
E-Waste	10,079	5.03
Glass	62,880	31
Metal	201,480	100.74
Sharps	98	
Plastic Bags	977	0.48
Totals	352,894	175.6

2023	Pounds	Tonnage
Aluminum	1,300	0.69
B-Car	8,010	4
Co-Mingle	22,280	11.14
E-Waste	14,440	7.21
Glass	58,220	29.11
Metal	170,561	82.28
Sharps	64.4	
Plastic Bags	574	
	275,449	134.43

Quarterly Report

Connie Harmon, Director
January 29, 2025

Q4 At-A-Glance:

	2024	Notes	
Nutrition		Data reflects a 5.2% increase in meals served in 2024, surpassing 2023's total of 105,437 meals.	
Q4 Meals on Wheels Meals Served	27,709		
<ul style="list-style-type: none"> • Home-delivered • Congregate 	22,779 4,930		
<ul style="list-style-type: none"> • YTD Unduplicated Clients Served • YTD New Clients • YTD Meals Served 	902 259 110,979		
Transportation			Total mileage for Q4 Transportation trips: 31,266 YTD mileage: 176,082 Data reflects a 5.5% increase in YOY trips provided.
Trips Provided YTD	16,664		
<ul style="list-style-type: none"> • YTD Unduplicated Clients Served • Q4 New Clients 	860 36		
Volunteerism		Volunteerism is at an all-time high, saving the County an estimated \$80,176 in Q4 and \$443,196 YTD.	
<ul style="list-style-type: none"> • Q4 Active Volunteers • Q4 Volunteer Hours 	147 2,394		
Budget			118% of expected revenue was received in FY24.
<ul style="list-style-type: none"> • Approved • Expended • Revenue Received 	\$4,024,044.00 \$2,960,393.00 \$3,956,784.00		

2024 strategic focus areas

- **Expand access and strengthen programming to meet community needs.**
 - Participation in Leisure & Learning programming continues to grow. New, monthly nutrition education classes were added in Q4 with K-State Extension in both Leavenworth and Tonganoxie, as well as a five-part *Empowered Caregiver* education series through The Alzheimer's Association, and a Dementia Support Group. In addition, a community volunteer offered Computer and iPhone Basics courses, and upon request, a second day of Mahjong was added each week.
 - Twenty-one new participants were added in Q4 and 136 YTD. Of those new Q4 participants, 47% are between the ages of 50-69.
 - Staff completed 248 Medicare counseling appointments for Leavenworth County residents during the Annual Open enrollment period from October 15 – December 7th.
 - The In-Home Support team has added 14 new clients receiving services in Q4 for chores, shopping and attendant care, bringing their unduplicated caseload to 83 clients.
 - With grant funding and donations, the Pets & Loving Seniors (PALS) and Pet2Vet programs served 108 active clients and 146 pets in 2024. 8,617 lbs. of food were delivered in FY24.
- **Broaden and evolve grant funding and fundraising efforts to sustain and expand current service offerings.**
 - In addition to grants the COA secured the following revenue in Q4 through fundraising and donations to support agency programs and offset costs: \$81,674.
 - \$ 3,000.00 Good Shepherd Thrift Store, Tonganoxie, to benefit Meals on Wheels
 - \$56,656.00 *Dancing Through the Decades* Meals on Wheels fundraiser
 - \$ 18,013.00 Christmas Project with support from local veterans organizations
 - \$ 4,005.00 Gift Shop donations
- **Grow and strengthen partnerships and volunteer engagement.**
 - Staff expanded our partnerships to 32 area businesses, churches, individuals and non-profits to provide comprehensive support and programming to the County's older adults. This includes the addition of Bauder Arts, Dillons, Good Shepherd Hospice, Novus Life Care, Roma Keller, Terry Bartkoski and Clark Construction.

- 604 transportation units were provided to support *The Deeper Window Association's* mobile respite program.



Report
2024
Year End

EMS 2024 Year-end report

Reports:

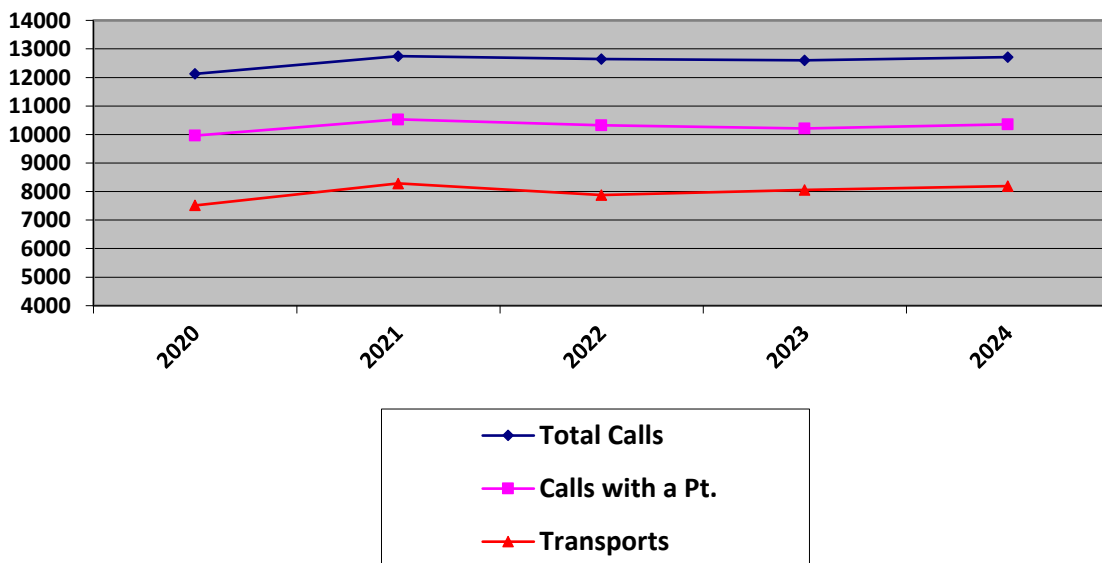
1. Budget –

	<u>2021</u>	<u>2022</u>	<u>2023</u>	<u>2024</u>
Approved Budget	3,836,941	4,122,580	4,123,580	4,550,782
Expenditures	4,177,820	1,102,400	4,402,726	4,479,426 (98.43%)
Required User Fee To be collected per published budget	3,195,000	3,195,000	3,195,000	3,195,000
User Fee Revenue	2,674,436	3,165,523	3,396,859	3,492,411.83 (109%)

2. Statistics

	<u>2020</u>	<u>2021</u>	<u>2022</u>	<u>2023</u>	<u>2024</u>
Total Calls	12,126	12,748	12,644	12,604	12,714
Total Calls with a Patient	9,962	10,531	10,323	10,209	10,359
Total Patients Transported	7,814	8,287	7,881	8,060	8,196

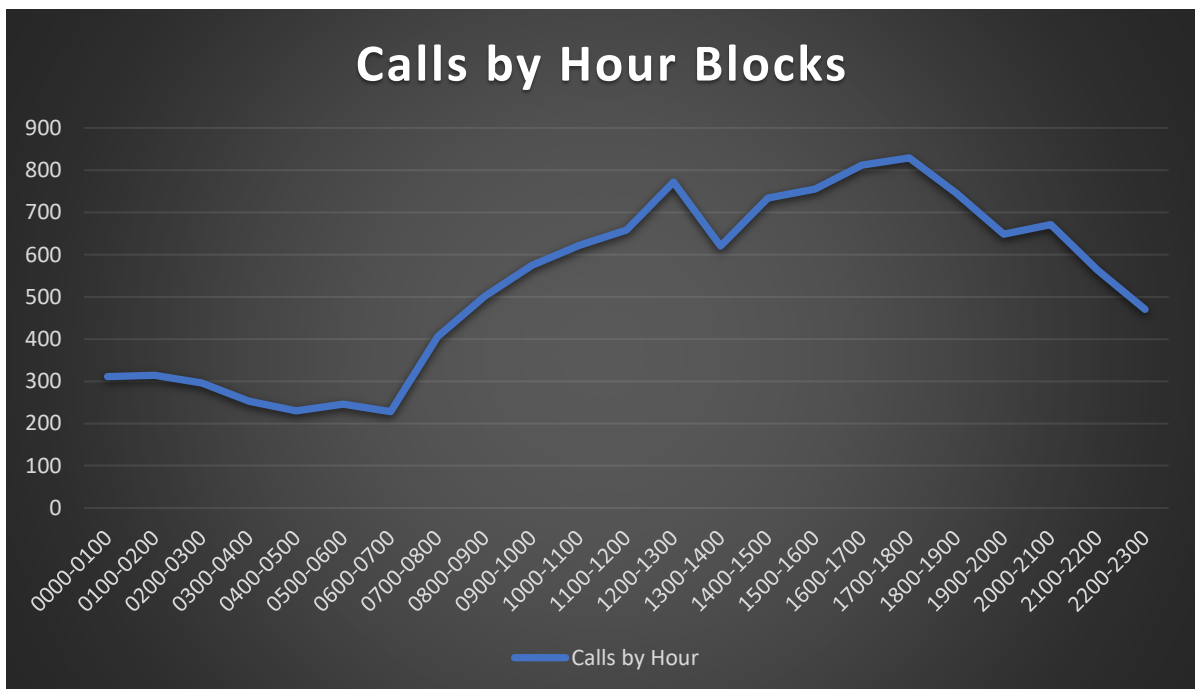
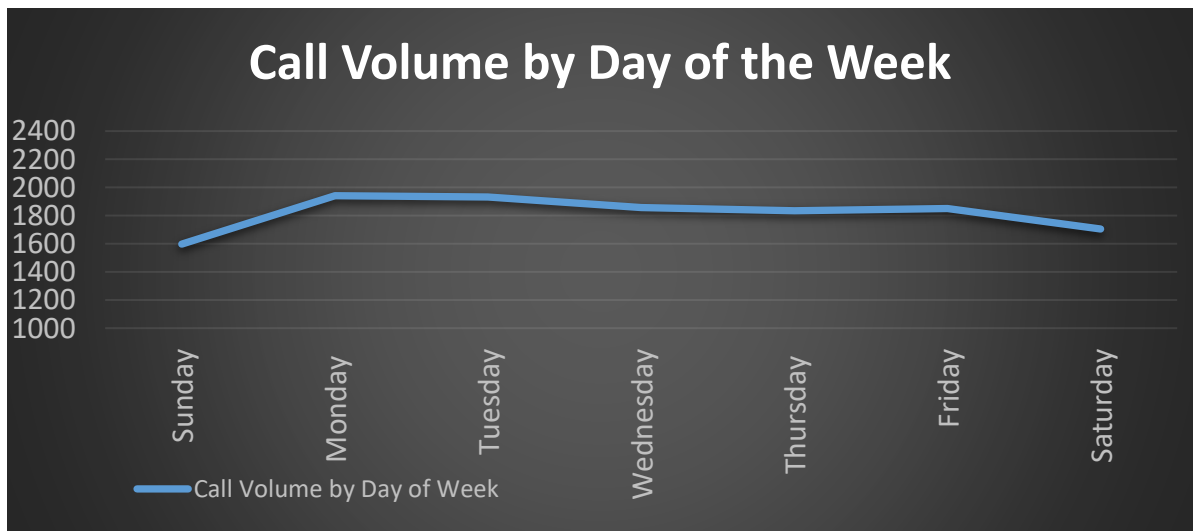
Runs Comparisons per Year



- **Total System Response time:**

Response Times 2024		
Minutes	# of Runs	% of Runs
0 – <5	6278	49.38%
5 - <10	3769	29.64%
10 - <15	1360	10.70%
> 15	970	7.63%
Not Arrive	337	2.65%

- **Call Volume Statistics 2024**



TOTAL CALLS PER GEOGRAPHICAL LOCATION 2024

City of Leavenworth	7525	59.19%
City of Lansing	1332	10.48%
City of Tonganoxie	958	7.82%
City of Basehor	654	5.14%
High Prairie Twp.	559	4.40%
Fort Leavenworth	322	2.52%
Fairmount Twp.	255	2.01%
Tonganoxie Twp.	224	1.76%
Reno Twp.	172	1.35%
Stranger Twp.	145	1.14%
Kickapoo Twp.	110	0.87%
City of Easton	95	0.75%
Sherman Twp.	74	0.58%
City of Linwood	71	0.56%
Alexandria Twp.	60	0.47%
Easton Twp.	55	0.43%
Delaware Twp.	39	0.31%
Mutual Aid	28	0.22%

3. Vehicle maintenance

Total vehicle Budget 107,500
Expenditures 103,612 (97%)

- Waiting on delivery of our 2023 and 2024 replacement ambulances
- 2025 unit should be delivered in Feb 2025.

4. Updates

- Update to Staffing
 - Hired and filled last 2 vacancies Jan 13th
 - KSBEMS renewal update
 - 79.8% renewal for EMT
↓464
 - 84.3% renewal for Paramedic
↓ 142
- Performing in-service training for new Cardiac Monitors
- Snow Storm – Jan 4 to Jan 6
 - 119 calls total
 - 87 with a patient
 - 71 transported
 - 12 cancelled PTA
 - 8 cancelled after arriving
 - 12 standby/staging

- 47 calls Jan 4
- 36 calls Jan 5
- 36 calls Jan 6

Falls	22
Transfer/Interfacility/ Palliative Care	19
Standby	12
Unknown Problem/Person Down	12
Breathing Problem	11
Traffic/Transportation Incident (MVC)	9
Sick Person	8

- (3) Ambulances required tow truck assistance
- (1) Ambulance slide and struck a curb

Leavenworth County Health Department Report 2024



Year End

Health Department Report Year End

1. Budget	<u>2021</u>	<u>2022</u>	<u>2023</u>	<u>2024</u>
Approved Budget	1,379,241	1,441,644	1,491,209	1,554,304
Expenditures	1,334,225	1,310,657	1,387,957	1,413,469
Required User Fee	110,000	110,000	110,000	110,000
User Fee Revenue Collected	65,930	74,223	93,828	88,899
Grants Received	630,437	870,129	716,922	788,856

2. Statistics	<u>2021</u>	<u>2022</u>	<u>2023</u>	<u>2024</u>
Health Department	5,933	5,946	5,952	5,220
WIC Clients	<u>5,562</u>	<u>13,276</u>	<u>13,262</u>	<u>12,720</u>
Total Clients	11,495	19,222	19,214	17,940

3. Items to report:

- Staffing
 - Registered Dietitian with WIC fulltime
 - Able to hire an IOC RD position
- Starting to apply for our annual ATL (Aid to Local) grants. Grant period is open Jan through mid-March. These grants constitute about 600k of our operational revenue.
- After being re-awarded \$81,616 for the family planning grant, we have an opportunity for requesting additional funding. The state FP program opened up for counties to request additional funding through a competitive process.
- Midyear for our state grants has just completed and working on completing all required reports to be submitted
- WIC has an upcoming audit in March